

Apeer

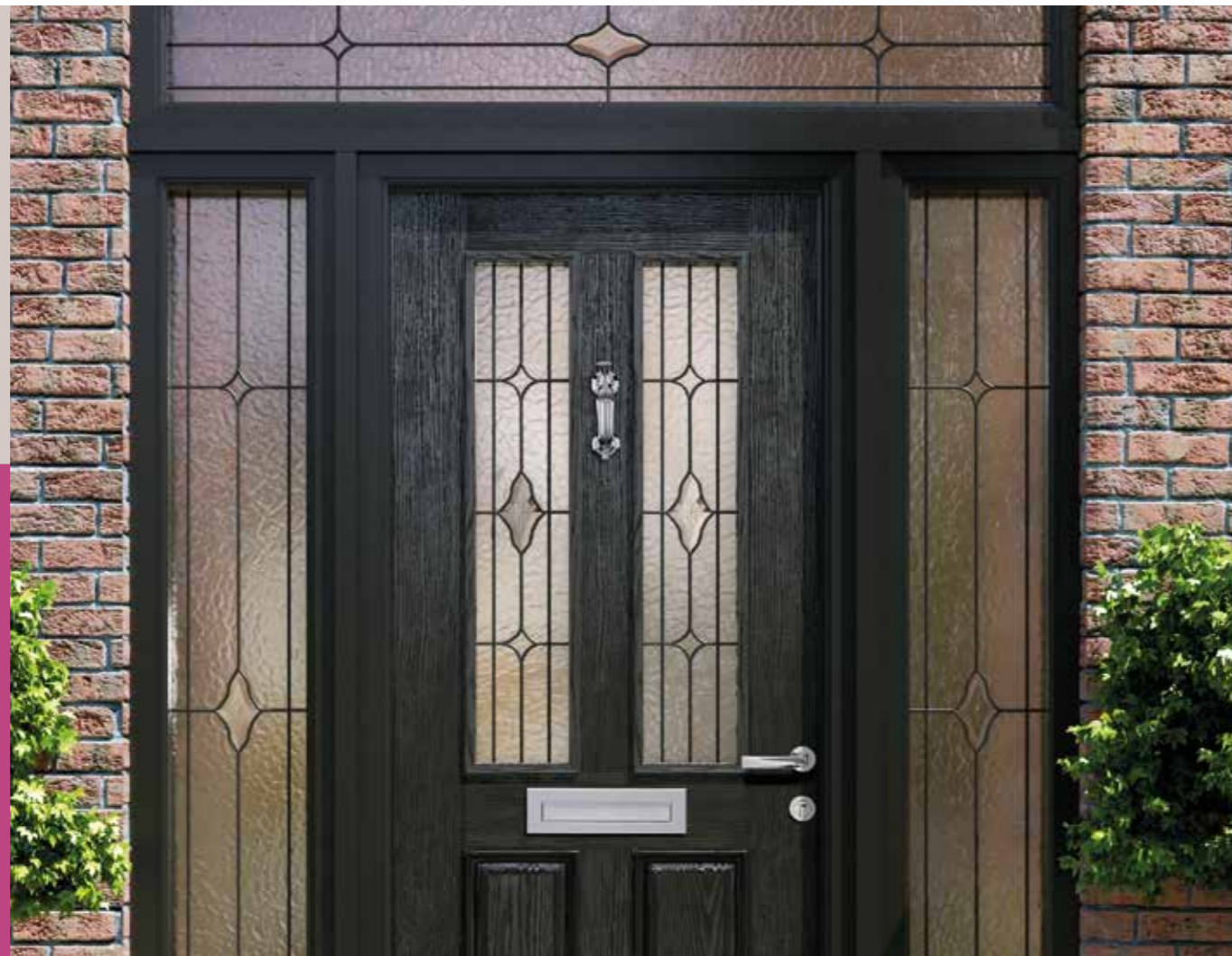
A

++

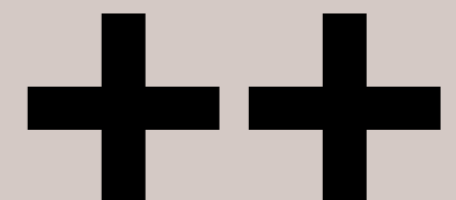


Enhance your home with the ultimate energy saving door.

Save money on your energy bills



Our mission is to help our customers lower their energy bills in style! We set ourselves a big target: to create an A++ energy efficient door. And we did. There's no other door that comes close.



Apeer 70mm doors are proven to be nearly **7 times** more thermally resistant than other 70mm doors.

All doors are not made the same



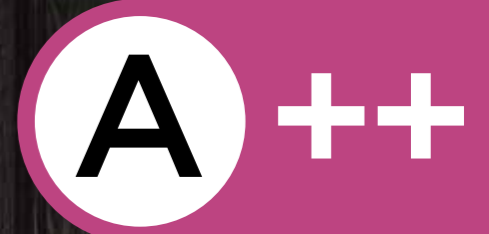
To keep our homes warm we insulate our walls and roof spaces. **So make sure your door has the right insulation as well.**



Apeer 70mm doors are A++ Rated.

Search for 'New World Developments' on the BFRC website to see for yourself.

With home heating energy prices skyrocketing, Apeer 70mm is a door for the times we're living through. No matter how we heat our homes – gas, electricity or oil – it's costing us all a lot more. **At Apeer our doors are nearly 7 times more thermally resistant than alternative hollow monocoque doors.**



Here's why an Apeer 70mm is nearly **7 times** more thermally resistant than a hollow monocoque door.

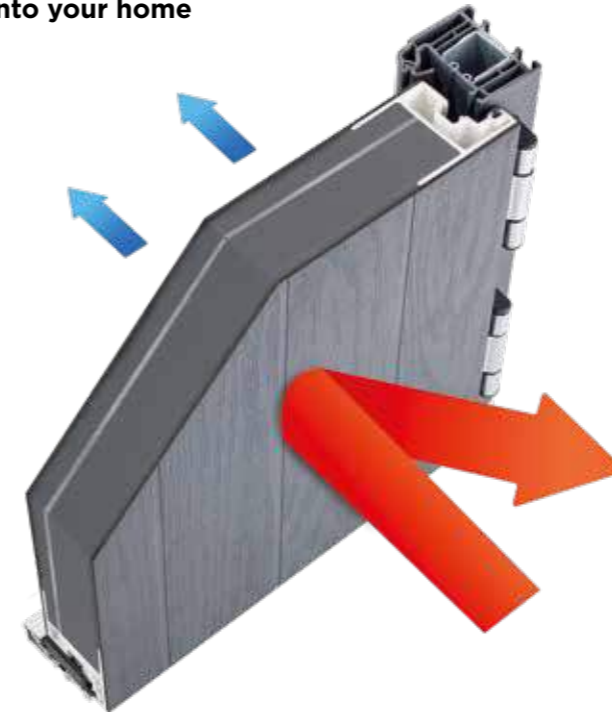
In order to demonstrate the superior thermal resistance of Apeer doors compared to our competitors, we engaged the renowned European testing certifier TÜV Rheinland, to conduct rigorous thermal testing. The results unequivocally confirm that all **Apeer 70mm doors** significantly **outperform** alternative options like **hollow monocoque doors** by nearly 7 times.

This substantial enhancement not only ensures a more comfortable and cosy environment but also translates into real savings on your annual heating bills.

Find out more about our Apeer 70mm doors at apeer.co.uk

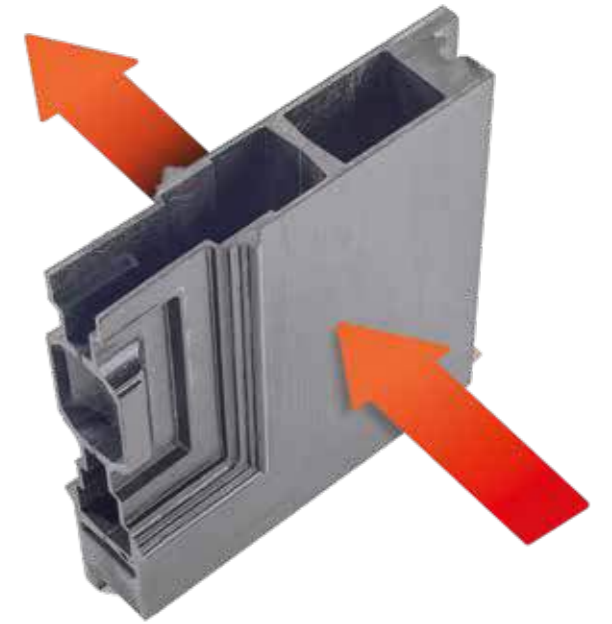
Apeer 70mm is proven to perform

Heat is reflected back into your home



A hollow monocoque door has high heat loss

Heat is lost through the door to the outside



Double sealed rebate creates an internal secondary seal

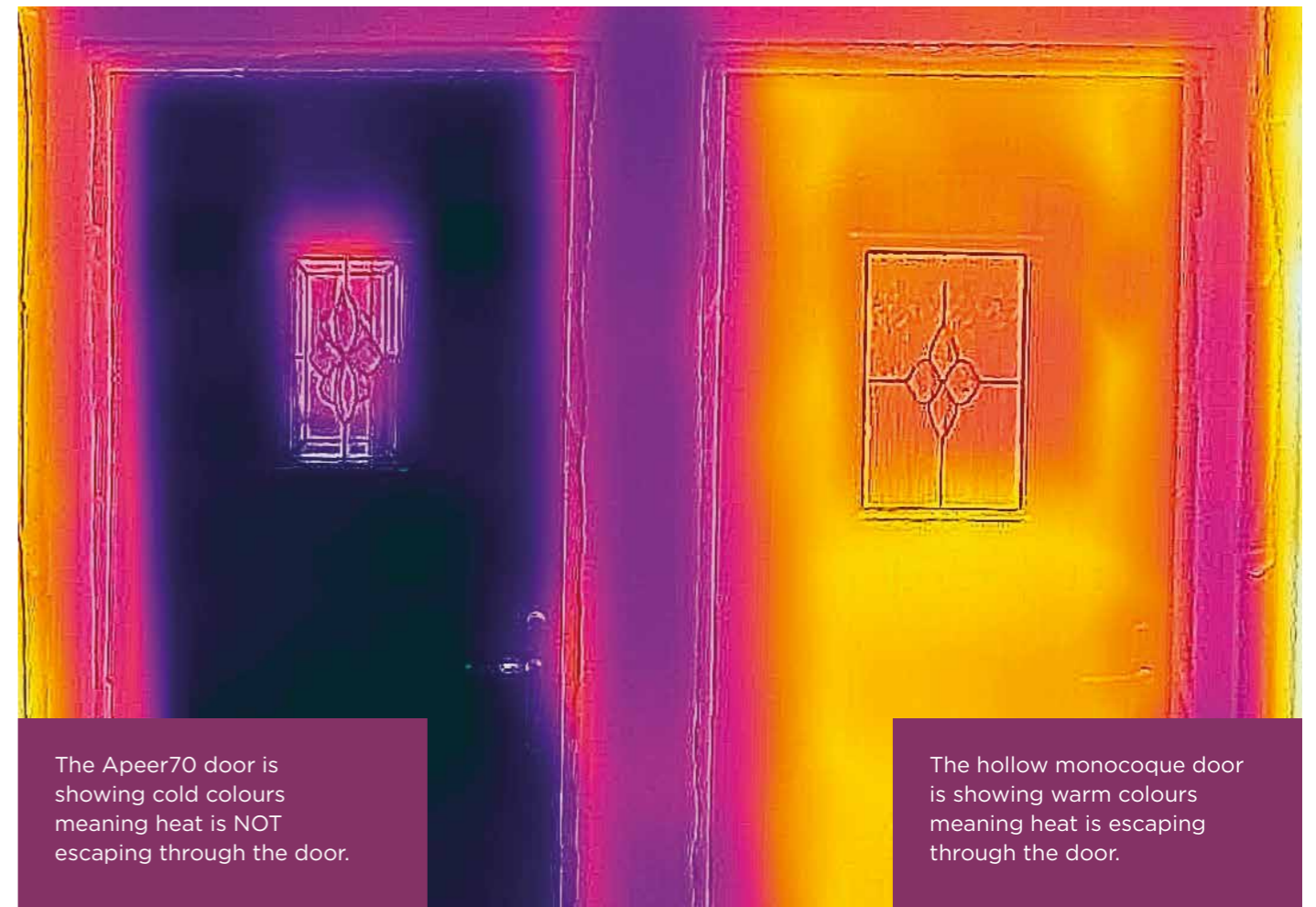
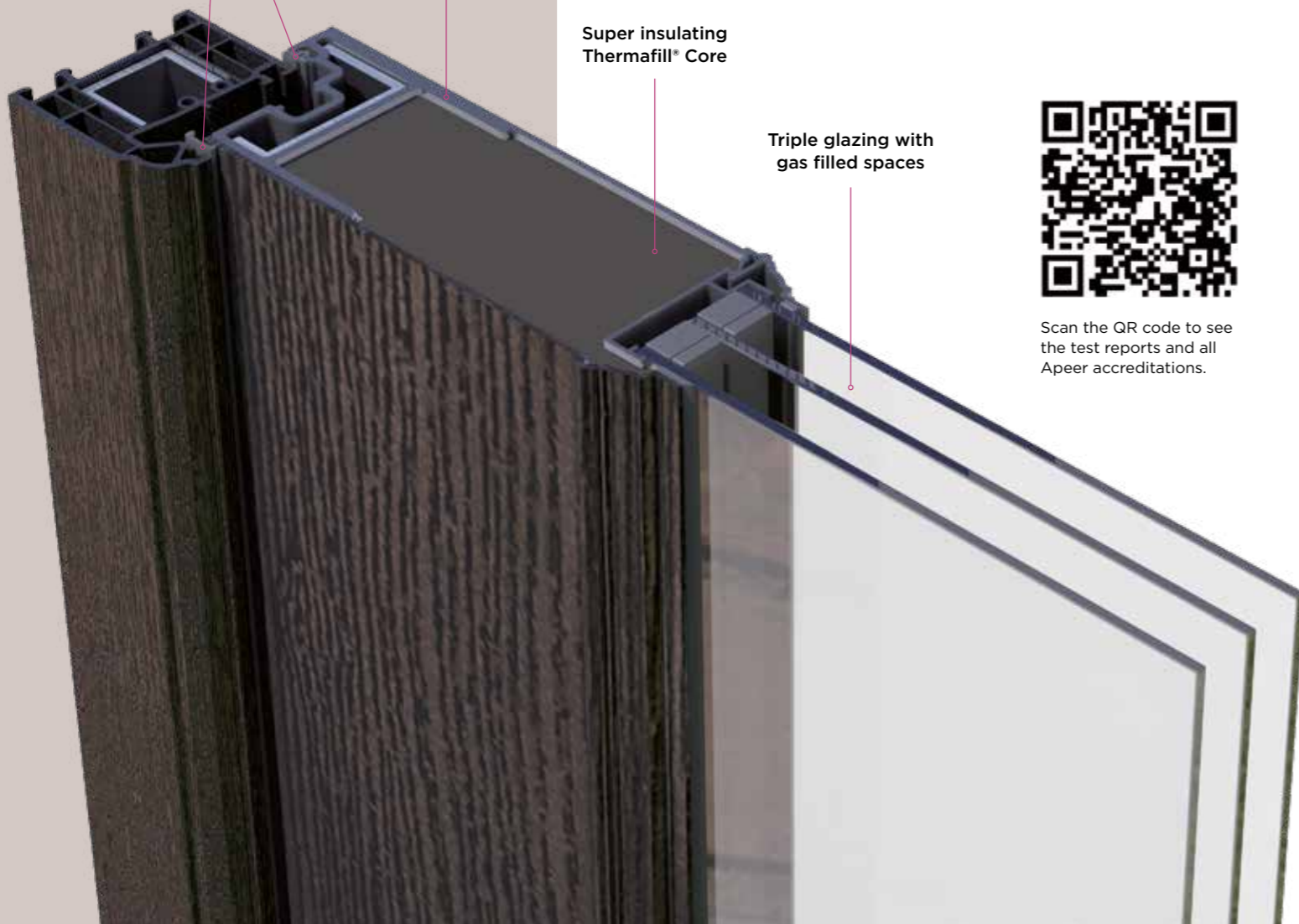
Door and frame set are 98mm thick

Super insulating Thermafill® Core

Triple glazing with gas filled spaces



Scan the QR code to see the test reports and all Apeer accreditations.



The Apeer70 door is showing cold colours meaning heat is NOT escaping through the door.

The hollow monocoque door is showing warm colours meaning heat is escaping through the door.

What makes an Apeer Door an A++ door?

With home heating energy prices skyrocketing, Apeer is a door for the times we're living through. No matter how we heat our homes – gas, electricity or oil – it's costing us all a lot more. At Apeer we can't do anything to bring that cost of energy down, but we can stop precious heat escaping through the biggest opening in your home.



We've put all our energy into saving yours.

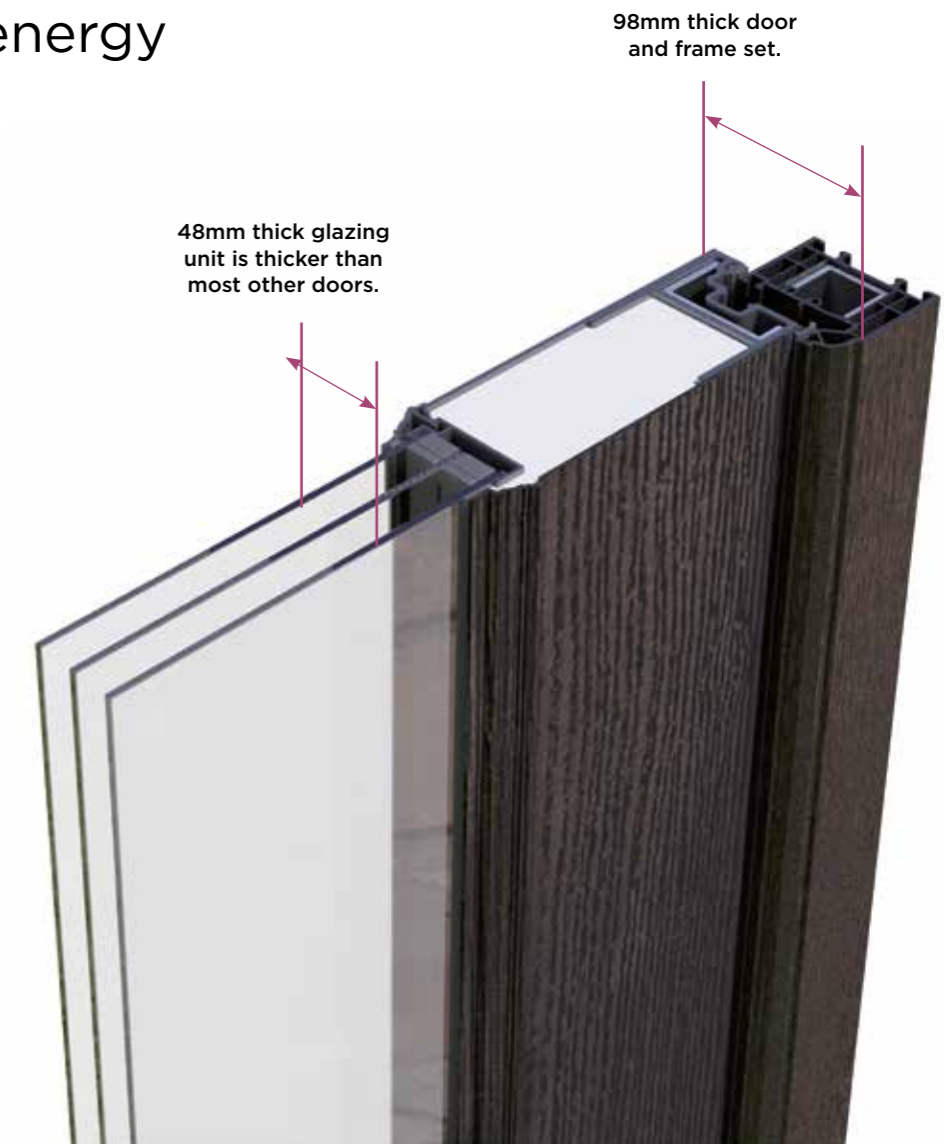
Our high strength, reinforced polyurethane core provides excellent insulation against the worst of mother nature's chills.

Our double rebated twin-seal construction is virtually airtight by creating an internal secondary seal.

Along with our 70mm super strong core, glass elements are triple glazed for extra insulation. We even gas-fill them for extra performance.

The unique multi-chamber, steel reinforced construction is an awesome insulator – keeping cold weather outside where it belongs.

A++ doors are an optional upgrade. To achieve **A++** we place a sheet of low emissivity, energy saving Low E Glass either side of our triple glazing unit, with our decorative glass in the middle. Note obscure glass is not available in A++ doors



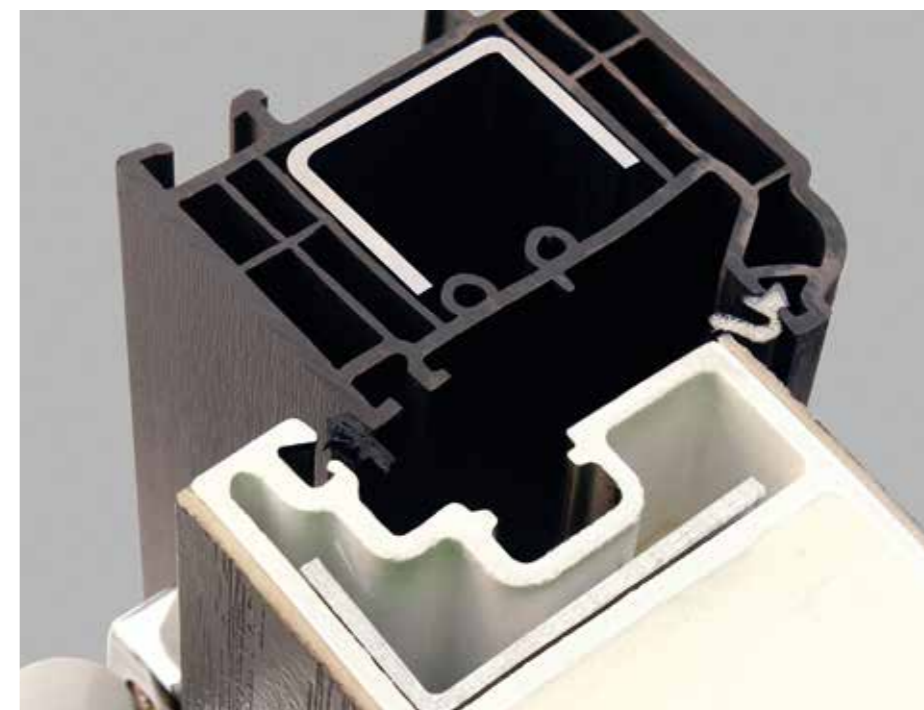
Our doors are at their best when the weather is at its worst.

For all you know, it could be blowing a gale outside, lashing rain or hailstones. Maybe all three at once. But you can't hear the wind's howl or feel the temperature drop. That's because you have an Apeer front door. Triple glazed, double rebated and twice the thickness of most others, it effortlessly keeps mother nature's wildest tantrums at bay.



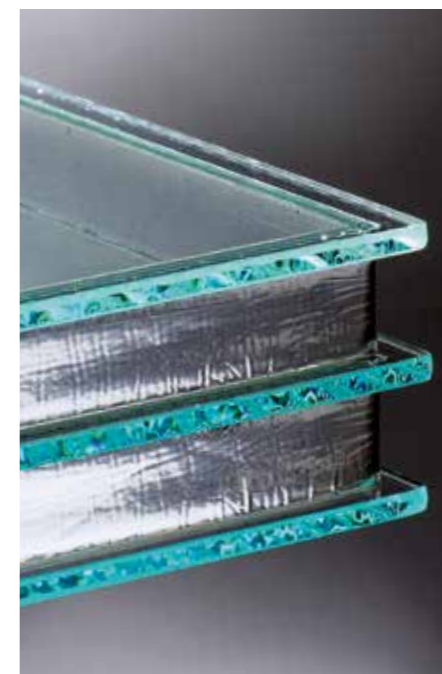
VIRTUALLY AIRTIGHT

Our double sealed rebate is virtually airtight by creating an internal secondary seal.



EXTRA INSULATION

Along with our 70mm super-strong, highly insulating polyurethane core, glass elements are triple glazed for extra insulation. We can even gas-fill them for improved thermal performance.



Glazed units are also available with Low E glass and can be gas filled to offer improved thermal performance. *Low E glass is only available in clear.

GOOD FOR THE PLANET. EVEN BETTER FOR YOUR WALLET.

Having one of the world's most energy efficient doors is a smart decision for wise heads. Sealing heat in while keeping cold out, they are A++ Rated by independent testers and far exceed the industry benchmark. By keeping more heat in your home, you'll keep more cash in your wallet.



Door Corellia APW2 with RG160 glass

magic WREATH holder



Only available on Apeer Doors, the magic wreath holder uses hidden magnets, meaning you can attach a new wreath to your door in seconds. So you can change your wreath as often as you change your mind.

Here's the magic touch!

The built-in magnets are completely invisible because we set them within the core of the door. All you have to do is attach the magnet kit to your wreath and hey presto. It's really that simple!



DOUBLE STRENGTH

The door magnets are located at 2 points for extra strength. This means you can have a wreath at a 'proud as punch' 350mm diameter.



FREE WREATH KIT

We give you a free wreath kit so you can hang your fav wreath as soon as your door is installed.



PREVENT SCRATCHING

There are attachable magnets and rubber dots in every wreath kit which prevent movement on windy days and scratching on your door.

SEE FOR YOURSELF!

Scan the QR code to visit apeer.co.uk/magicwreathholder and watch the video.





Apeer anti-burglary cylinder snap guarantee

£20000

You're in safe hands.

We've thought of everything that can go wrong with your door. Then made sure it won't. From police-approved locks to high-resistant frames, you're in safe hands.



Anti-burglary cylinder snap guarantee in conjunction with Yale and Ultion, if registered within 28 days of purchase with Yale or Ultion, and inline with the T&Cs.



A great night's sleep.

Rest easy - our doors are as secure as they come. Good to know, whether you're tucked up at home or away for the night.

Every Apeer door comes with a multi-point locking system as well as a super-strong, highly insulating polyurethane core that far exceeds all Police-approved security standards.



Strength from within



Inside every Apeer 70mm door there's a super-strong steel and metal reinforcing that forms part of the highly insulating polyurethane core. And with a vertical steel bar running top to bottom along the inside edge, our doors far exceed Police-approved security standards.

Extremely strong vertical steel reinforcing bar adds rigidity and security.



Super-strong, metal reinforced, highly insulating polyurethane core.



Yale SensCheck™ Sensors put you in control of your home security.

Using SensCheck™ Sensors, you can check to see the status of your home, from anywhere, anytime.

Yale SensCheck™ Sensors are simple to install in compatible smart doors. Monitor the status of your doors and windows from anywhere at any time via the Yale Smart Living Home App. Receive notifications and tamper alerts straight to your smartphone, or chime notifications when the status of your door or windows change.



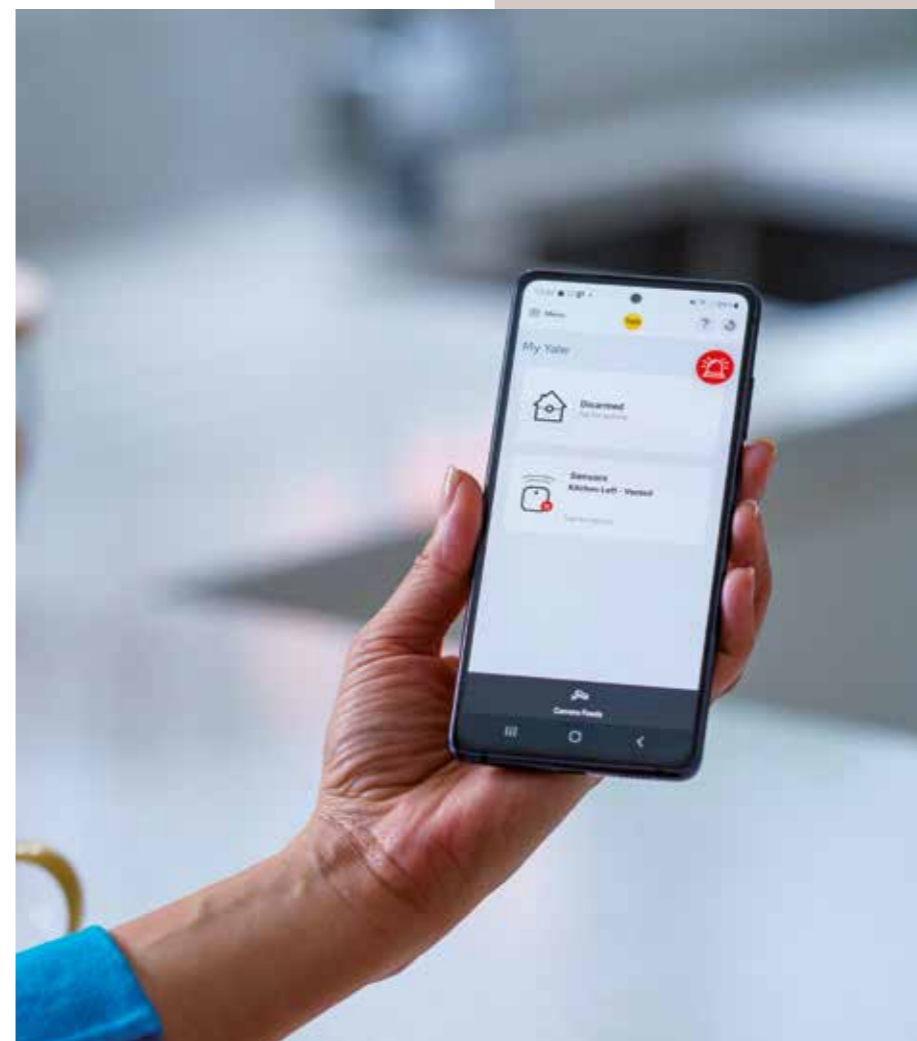
Check the status of your doors and windows with your voice.

Integration with Amazon Alexa and Google Assistant makes it even easier to check the status of your home.

Simply ask, '...is the back door locked' or '...is the front door closed', and your voice assistant can tell you in real time if you've locked your door or window, giving you total peace of mind.

Integration with Philips Hue means your lights will flash once when alarm is armed, or disarmed. It can also act as a visual deterrent alongside notifications and audible alarm from the Sync Hub.

Senscheck must be specified at the time of order and it cannot be fitted once the door is installed

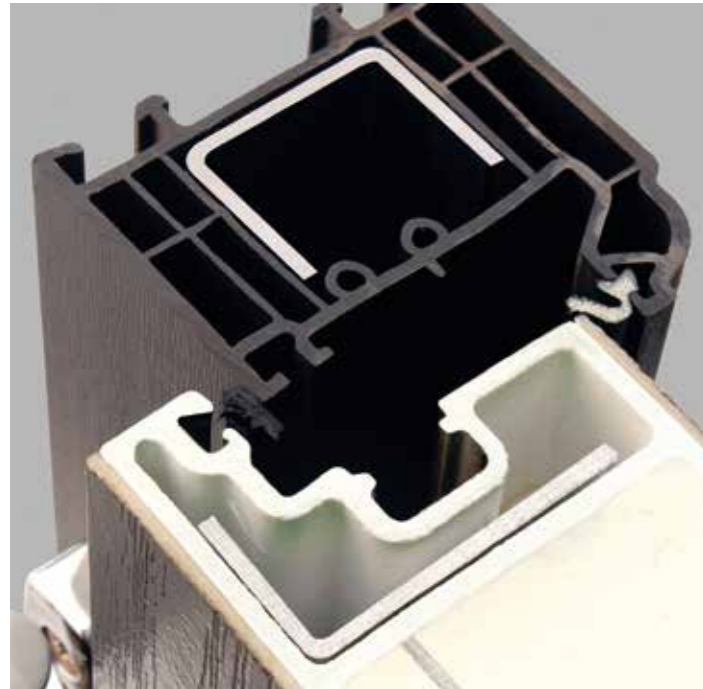


Benefits of SensCheck™ include:

- Sensor status notifications and tamper alerts
- Geo-fencing notifications
- Part Arm functionality
- Chime notifications
- Integration with Amazon Alexa, Google Assistant and Philips Hue
- BSI IoT accredited
- Ability to upgrade to full Yale Smart Security System



Please note Apeer only supplies the lock as Senscheck ready and all additional equipment and fittings must be purchased separately from Yale.



We've got your back.
And your front.

Install an Apeer door and you'll have the weight of our entire design team and security specialists protecting you and your home from intruders. Our doors comfortably exceed all industry standard impact and cut-through tests.

Secured by Design doors must be ordered with laminated glass.



Toughened, triple glazing housed in reinforced mouldings with the optional extra of laminate glass for optimum security.



Extremely strong vertical steel reinforcing bar in our doors adds rigidity and security.



A strong coupling bar adds strength and stability.



Multi-point Yale locking system features two rollers, three hooks, two deadbolts and a latch. It secures the door from top to bottom.

Hardened steel hinge bolts make it virtually impossible to force open our doors or lift them off their hinges.

In order to ensure the best quality accessories are used on Apeer doors, New World reserves the right to replace any of the above options as required. Hardware comes with manufacturer's warranty. Please note the high level automatic lock is not suitable for all users and we recommend you check with your supplier before final order sign off.

You pick the colour, we match it.

If one of our 27 colours isn't exactly what you're looking for, our manufacturing process enables you to match your door to most colours. Simply bring along a RAL or BS colour reference and we'll match it.



Door Endor ACDQ2 with RG158 in door, RG151SL in Sidepanels in Porcelain Blue



Door Witton ACDM2 with RG150 in door, Minster in Sidelights in Dark Red



Door Hayton SFG20 with RG166 in door, RG166SL in Sidepanels in Green Mist



Door Corellia APW2 with RG160 in door, RG151SL in Sidepanels in Agate Grey



Check out our standard and premium colour palettes.

LOW MAINTENANCE

To keep your Apeer door looking great, gently wipe down your door with warm soapy water and a soft cloth.

STANDARD COLOURS



PREMIUM COLOURS



Metallic Colours are not available. There is an extra charge for Premium and RAL/BS colours. We may not be able to match all RAL/BS colours. 5 year guarantee on Premium Colours

Every effort has been made to reproduce the colour of our Apeer doors and the coloured film in the decorative glass designs. However, printing constraints will give rise to some colour deviation. For exact colour matching please request a colour sample from your approved supplier before purchase. Please note the grain on the GRP Apeer door does not replicate the grain on the frame as it is a PVC foil. The grain and colour on the Oak and Rosewood doors are not an exact match to the Oak and Rosewood PVC frames.



Paint Warranty

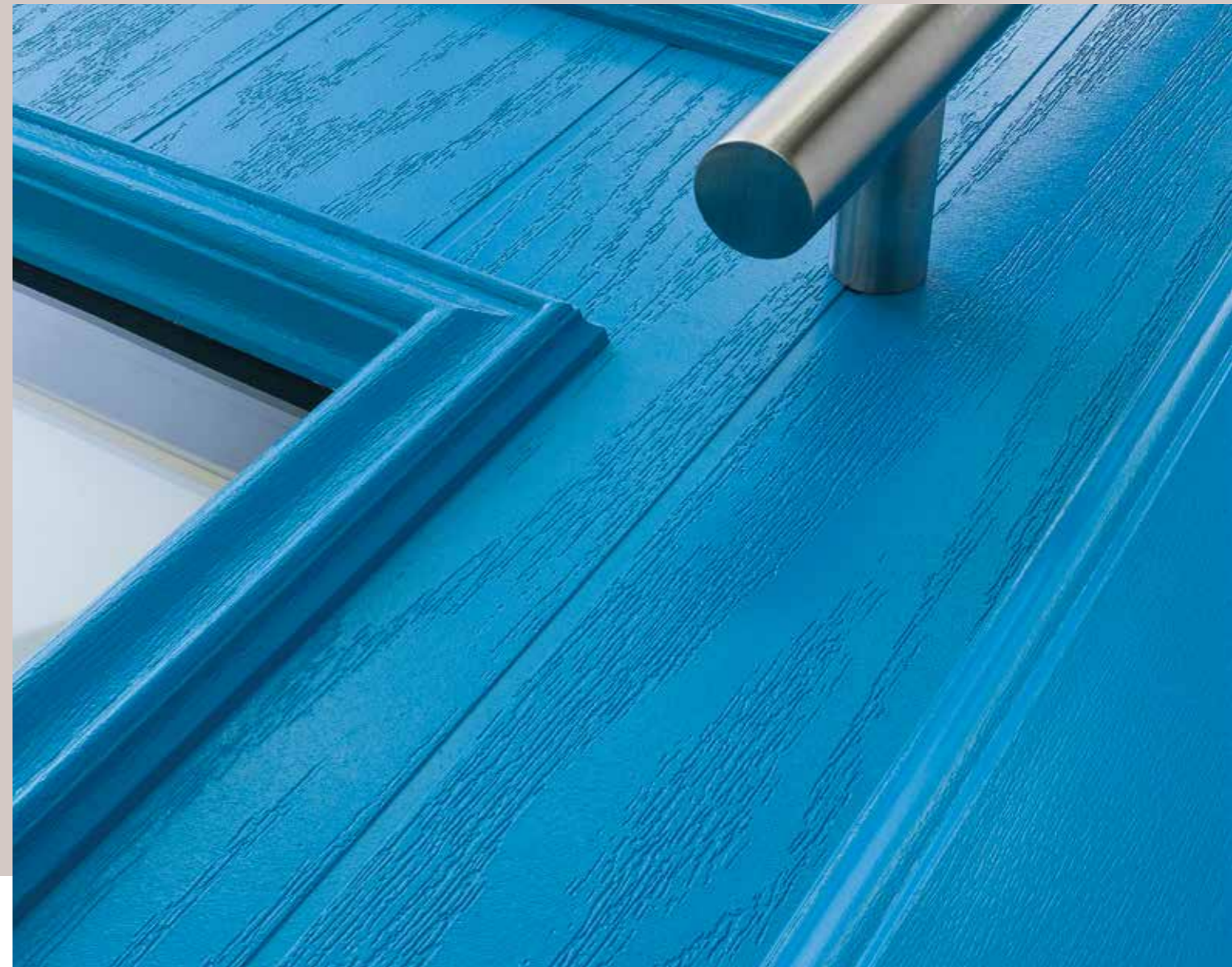
Apeer doors come with a **10 year paint warranty** meaning your door will look great for many years to come.

Although our doors look like natural wood, they're made from a robust composite material. The colour is hard-wearing, low maintenance and is considered the best automotive grade paint from the world's largest paint supplier, Sherwin Williams*.



Free with every Apeer door: an extra day's holiday each year.

Because you never have to strip, sand or paint an Apeer door. Ever. You get extra time off - that rare sunny day you'd normally spend refurbishing your flaky, peeling door.





10 Year Anti-Bow Warranty

Exterior wooden doors can bow by up to 7mm when external and internal temperatures vary. Apeer doors are 60% thicker than other doors in the market and have a GRP and steel reinforced door sash with a double rebated construction. With 7 layers of interwoven fibreglass skins for enhanced strength and durability, Apeer Doors will always retain their shape and stay fully operational*.



The solid 'thwump' when you close an Apeer door sounds like no other.

It's a sound that signals superior construction, a reinforced frame, virtually airtight seals and completely wood free. Which is why we can bring you an industry first, **10 Year Anti-Bow Warranty** so you know that your Apeer door will perform for years.



*Contact Apeer for details on terms and conditions on the anti-bow warranty and door care maintenance guidelines

Extra wide doors, perfect for accessibility

Wider than our standard doors, our accessible doors are available up to 1087mm wide, allowing ample room for wheelchairs, walking aids and many battery-powered mobility scooters.



All doors with code ACD are extra wide.



Door Hoth ACDG3 with RG155 in door, RG21SL in sidepanels in Black



Door Hoth ACDG3 with RG154 in door, RG150SL in Sidepanels in White



Accessible MDS70 threshold including ramp

The glazing trim on the extra wide ACD traditional doors has been designed to protrude out from the door, and is different to the finish on our standard (AP) doors.





TRADITIONAL COLLECTION

Elegantly timeless,
the Apeer Traditional
Collection is designed
to enhance homes with
traditional good looks.

Rowton

Door APM2, Glass BO508*
Shown in Black

A++

*Our exclusive, energy efficient A++ rating is an optional upgrade on the door only and is not available with obscure backing glass.



Furniture Shown: Karcher Handle, Doctors Knocker and Architectural Push-in Letterplate all shown in Chrome. *Glass design shown with Minster backing glass.

Amazing Glazing

Add a personal touch with bespoke, handcrafted glass.

You've chosen the door style and picked a colour that perfectly complements your home. Now for the finishing touch: glass designed by you and handcrafted by our in-house artisan glaziers.



Glass Code FT14
Colour Steel Blue

A++



Glass Code BO556
Colour Chartwell Green

A++



Glass Code BO500
Colour Cream

A++

Door APM2*, Glass GR1
Shown in Light Pink (RAL 3015)

GR1 glass has been designed by our inhouse glass designers and any imprints on the film are a natural part of the handcrafted process.



A++

Furniture Shown: Sweet Handle, Sweet Knocker, Sweet Letterplate all shown in Rose Gold. *Glass design shown with Minster backing glass.

Every effort has been made to reproduce the colour of our Apeer doors and the coloured film in the decorative glass designs. However, printing constraints will give rise to some colour deviation. All Apeer 70mm doors are triple glazed as standard. Please note the grain on the GRP Apeer door does not replicate the grain on the frames as it is a PVC foil. Sidelight and toplight designs will depend on sidelight and toplight final sizes and may vary from design shown. Coloured film in glass designs is not an exact match to the door colour.

Witton

Door ACDM2, Glass SB121
Shown in Agate Grey



Door ACDM2, Glass RG16, Sidelight Glass Minster
Shown in Anthracite Grey



Door ACDM2, Glass RG151, Sidelight Glass SB26
Shown in Dark Red



Door ACDM2, Glass RG150, Sidelight Glass Minster
Shown in Dark Red



Door ACDM2, Glass RG21, Sidepanel Glass RG21SL
Shown in White



Furniture Shown: Karcher Handle, Doctors Knocker and Architectural Push-in Letterplate all shown in Chrome.

Every effort has been made to reproduce the colour of our Apeer doors and the coloured film in the decorative glass designs. However, printing constraints will give rise to some colour deviation. All Apeer 70mm doors are triple glazed as standard. Please note the grain on the GRP Apeer door does not replicate the grain on the frames as it is a PVC foil. Sidelight and toplight designs will depend on sidelight and toplight final sizes and may vary from design shown. Coloured film in glass designs is not an exact match to the door colour.

RG glass designs are only available in the door styles shown and are not available on other door styles. Matching fully glazed sidelights are not available for RG glass, some RG glass is available with matching side panels. There is no choice of backing glass with RG glass. RG glass is only available as shown and cannot be changed by Apeer.

Dunluce 1

Door APA1, Glass LO64*
Shown in Agate Grey

A++

*Our exclusive, energy efficient A++ rating is an optional upgrade on the door only and is not available with obscure backing glass.



Furniture Shown: Pewter Noble Handle, Pewter Bull Ring Knocker, Pewter Push-in Letterplate and Pewter Door Pull. *Glass design shown with Satin backing glass.

Every effort has been made to reproduce the colour of our Apeer doors and the coloured film in the decorative glass designs. However, printing constraints will give rise to some colour deviation. All Apeer 70mm doors are triple glazed as standard. Please note the grain on the GRP Apeer door does not replicate the grain on the frames as it is a PVC foil. Sidelight and toplight designs will depend on sidelight and toplight final sizes and may vary from design shown. Coloured film in glass designs is not an exact match to the door colour.

Amazing Glazing

Add a personal touch with bespoke, handcrafted glass.

You've chosen the door style and picked a colour that perfectly complements your home. Now for the finishing touch: glass designed by you and handcrafted by our in-house artisan glaziers.



Dunluce 3 APA3
Glass Code LF549
Colour Anthracite Grey



Dunluce 3 APA3
Glass Code BO508
Colour Light Pink



Dunluce 3 APA3
Glass Code LO64
Colour Chartwell Green



Dunluce 2, Door APA2, Glass BO500*
Shown in Dark Red

Furniture Shown: Architectural Handle, Architectural Knocker, Architectural Push-in Letterplate all shown in satin silver. *Glass design shown with Minster backing glass.

Banwell 3

Door ACDA3, Glass RG182,
Sidepanel Glass RG151SL Shown in Anthracite Grey



Available width up to 1087mm



Furniture Shown: Classic Handle, Letterbox and Urn knocker shown in Chrome

Every effort has been made to reproduce the colour of our Apeer doors and the coloured film in the decorative glass designs. However, printing constraints will give rise to some colour deviation. All Apeer 70mm doors are triple glazed as standard. Please note the grain on the GRP Apeer door does not replicate the grain on the frames as it is a PVC foil. Sidelight and toplight designs will depend on sidelight and toplight final sizes and may vary from design shown. Coloured film in glass designs is not an exact match to the door colour.

Amazing Glazing

Add a personal touch with bespoke, handcrafted glass.

You've chosen the door style and picked a colour that perfectly complements your home. Now for the finishing touch: glass designed by you and handcrafted by our in-house artisan glaziers.



Glass Code RG18
Colour Black



Glass Code RG36
Colour Agate Grey



Glass Code BO556
Colour White



Available width up to 1087mm



Furniture Shown: Karcher Handle, Limited Edition Bumble Bee Knocker, Architectural Push-in Letterplate all shown in Chrome.

RG glass designs are only available in the door styles shown and are not available on other door styles. Matching fully glazed sidelights are not available for RG glass, some RG glass is available with matching side panels. There is no choice of backing glass with RG glass. RG glass is only available as shown and cannot be changed by Apeer.

Portland

Door APL2, Glass BO510*
Shown in Porcelain Blue

A++

*Our exclusive, energy efficient A++ rating is an optional upgrade on the door only and is not available with obscure backing glass.



Furniture Shown: Forged Black Noble Handle, Forged Black Bull Ring Knocker, Forged Black Push-in Letterplate, Forged Black Door Pull. *Glass design shown with Minster backing glass.

Amazing Glazing

Add a personal touch with bespoke, handcrafted glass.

You've chosen the door style and picked a colour that perfectly complements your home. Now for the finishing touch: glass designed by you and handcrafted by our in-house artisan glaziers.



Glass Code BO508
Colour Traffic Red



Glass Code BO509
Colour Turquoise Blue



Glass Code FT35 Clear lines and fused tiles on sandblasted background
Colour Light Grey



Furniture Shown: Karcher Handle, Urn Knocker and Architectural Push-in Letterplate all shown in Chrome. *Glass design shown with Minster backing glass.

Every effort has been made to reproduce the colour of our Apeer doors and the coloured film in the decorative glass designs. However, printing constraints will give rise to some colour deviation. All Apeer 70mm doors are triple glazed as standard. Please note the grain on the GRP Apeer door does not replicate the grain on the frames as it is a PVC foil. Sidelight and toplight designs will depend on sidelight and toplight final sizes and may vary from design shown. Coloured film in glass designs is not an exact match to the door colour.

Portland

Door APL2, Glass TP1*
Shown in Heather Violet Pink (RAL 4003)

A++

*Our exclusive, energy efficient A++ rating is an optional upgrade on the door only and is not available with obscure backing glass.

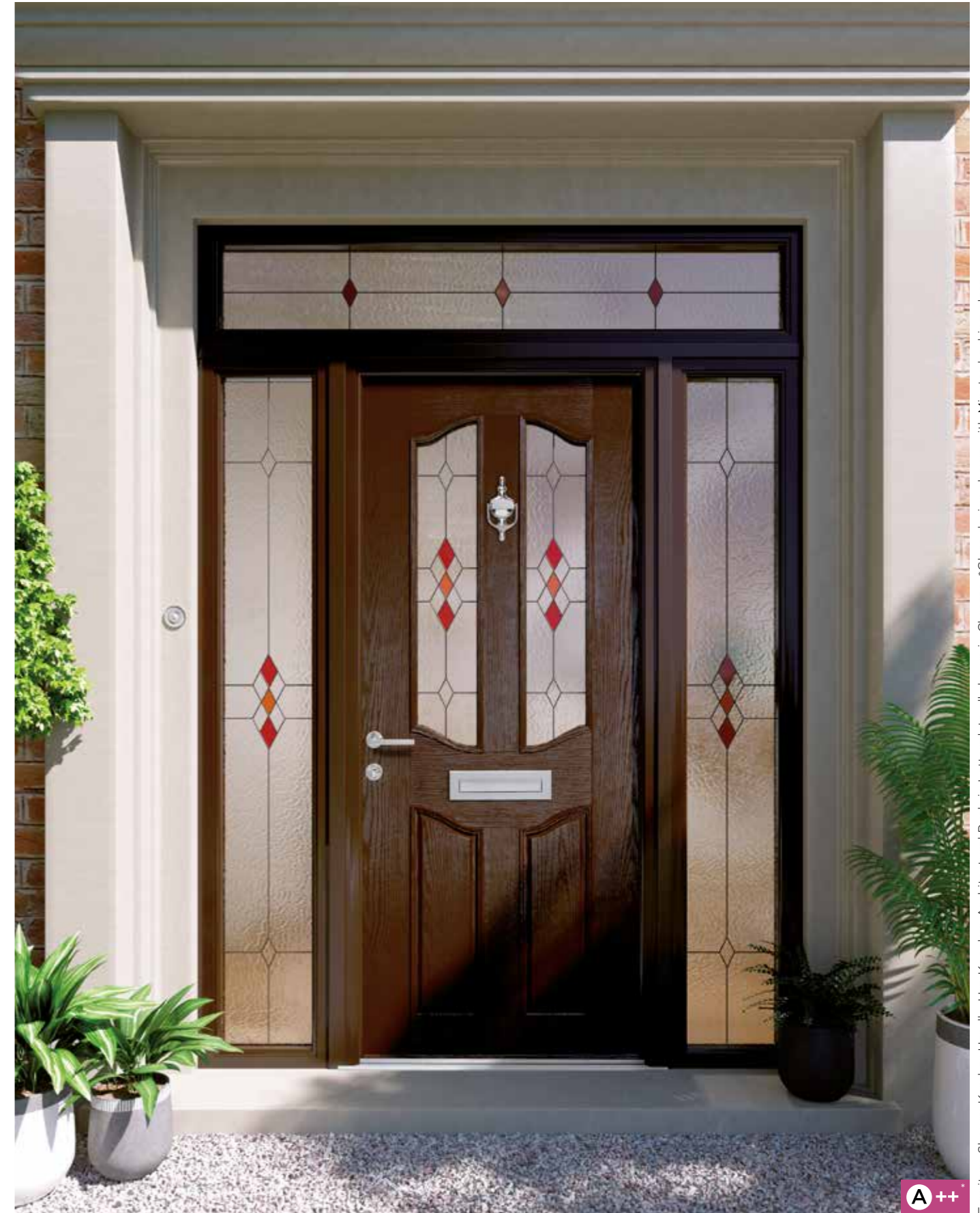
Furniture Shown: Sweet Handle, Sweet Knocker, Sweet Letterplate, Sweet Numeral all shown in Rose Gold. *Glass design shown with Minster backing glass.



The pink film used in the glass design has a sparkle finish as shown here.

Portland

Door APL2, Glass LF517*
Shown in Rosewood



Furniture Shown: Karcher Handle, Urn Knocker, Architectural Push-in Letterplate all shown in Chrome. *Glass design shown with Minster backing glass.

A++

Every effort has been made to reproduce the colour of our Apeer doors and the coloured film in the decorative glass designs. However, printing constraints will give rise to some colour deviation. All Apeer 70mm doors are triple glazed as standard. Please note the grain on the GRP Apeer door does not replicate the grain on the frames as it is a PVC foil. Sidelight and toplight designs will depend on sidelight and toplight final sizes and may vary from design shown. Coloured film in glass designs is not an exact match to the door colour.

Hanwell

Door APY2, Glass FT35*
Shown in Anthracite Grey

A ++

*Our exclusive, energy efficient A++ rating is an optional upgrade on the door only and is not available with obscure backing glass.



Furniture Shown: Architectural Handle, Architectural Push-in Letterplate both shown in Chrome. *Glass design shown with Minster backing glass.

Amazing Glazing

Add a personal touch with bespoke, handcrafted glass.

You've chosen the door style and picked a colour that perfectly complements your home. Now for the finishing touch: glass designed by you and handcrafted by our in-house artisan glaziers.

Door APY2, Glass FT14*
Shown in Steel Blue



Furniture Shown: Karcher Stainless Steel Handle with Stainless Steel Letterplate. *Glass design shown with Minster backing glass.



Glass Code BO7
Colour Agate Grey

A ++



Glass Code LF35
Colour White

A ++



Glass Code LO21
Colour Porcelain Blue

A ++

Every effort has been made to reproduce the colour of our Apeer doors and the coloured film in the decorative glass designs. However, printing constraints will give rise to some colour deviation. All Apeer 70mm doors are triple glazed as standard. Please note the grain on the GRP Apeer door does not replicate the grain on the frames as it is a PVC foil. Sidelight and toplight designs will depend on sidelight and toplight final sizes and may vary from design shown. Coloured film in glass designs is not an exact match to the door colour.

Door APS2, Glass B07*
Shown in Chartwell Green



A++

Furniture Shown: Architectural Handle and Push-in Letterplate in Chrome

Amazing Glazing

Add a personal touch with bespoke, handcrafted glass.

You've chosen the door style and picked a colour that perfectly complements your home. Now for the finishing touch: glass designed by you and handcrafted by our in-house artisan glaziers.



A++

Glass Code B0506
Colour Traffic Red



A++

Glass Code B0508
Colour Porcelain Blue



A++

Glass Code LF517
Colour Black

Lambton

Door APS2, Glass B07*
Shown in Rosewood

A++

*Our exclusive, energy efficient A++ rating is an optional upgrade on the door only and is not available with obscure backing glass.



Furniture Shown: Gold Handle with Gold Letterplate. *Glass design shown with Minster backing glass.

Every effort has been made to reproduce the colour of our Apeer doors and the coloured film in the decorative glass designs. However, printing constraints will give rise to some colour deviation. All Apeer 70mm doors are triple glazed as standard. Please note the grain on the GRP Apeer door does not replicate the grain on the frames as it is a PVC foil. Sidelight and toplight designs will depend on sidelight and toplight final sizes and may vary from design shown. Coloured film in glass designs is not an exact match to the door colour.

Corellia

Door APW2, Glass RG160,
Sidepanel Glass RG151SL, Shown in Light Grey



Furniture Shown: Regal Handle in Pewter

A+

Every effort has been made to reproduce the colour of our Apeer doors and the coloured film in the decorative glass designs. However, printing constraints will give rise to some colour deviation. All Apeer 70mm doors are triple glazed as standard. Please note the grain on the GRP Apeer door does not replicate the grain on the frames as it is a PVC foil. Sidelight and toplight designs will depend on sidelight and toplight final sizes and may vary from design shown. Coloured film in glass designs is not an exact match to the door colour. Letterplate not available in this style.

Amazing Glazing

Add a personal touch with bespoke, handcrafted glass.

You've chosen the door style and picked a colour that perfectly complements your home. Now for the finishing touch: glass designed by you and handcrafted by our in-house artisan glaziers.

Door APW2, Glass RG161, Sidepanel Glass RG150SL
Shown in White



A+

Furniture Shown: Classic Handle shown in Chrome.



A++

Glass Code SB27
Colour Heather Violet Pink



A++

Glass Code FT48 Clear lines and fused tiles on sandblasted background
Colour Traffic Red



RG glass designs are only available in the door styles shown and are not available on other door styles. Matching fully glazed sidelights are not available for RG glass, some RG glass is available with matching side panels. There is no choice of backing glass with RG glass. RG glass is only available as shown and cannot be changed by Apeer.

Corellia

Door APW2, Glass RG62,
Sidepanel Glass RG21SL, Shown in Anthracite Grey



Every effort has been made to reproduce the colour of our Apeer doors and the coloured film in the decorative glass designs. However, printing constraints will give rise to some colour deviation. All Apeer 70mm doors are triple glazed as standard. Please note the grain on the GRP Apeer door does not replicate the grain on the frames as it is a PVC foil. Sidelight and toplight designs will depend on sidelight and toplight final sizes and may vary from design shown. Coloured film in glass designs is not an exact match to the door colour.

RG glass designs are only available in the door styles shown and are not available on other door styles. Matching fully glazed sidelights are not available for RG glass, some RG glass is available with matching side panels. There is no choice of backing glass with RG glass. RG glass is only available as shown and cannot be changed by Apeer.



Hoth

Door ACDG3, Glass RG154,
Sidepanel Glass RG150SL, Shown in White



Available width up to 1087mm



Furniture Shown: Architectural Handle and Push-in Letterplate in Chrome

Every effort has been made to reproduce the colour of our Apeer doors and the coloured film in the decorative glass designs. However, printing constraints will give rise to some colour deviation. All Apeer 70mm doors are triple glazed as standard. Please note the grain on the GRP Apeer door does not replicate the grain on the frames as it is a PVC foil. Sidelight and toplight designs will depend on sidelight and toplight final sizes and may vary from design shown. Coloured film in glass designs is not an exact match to the door colour.

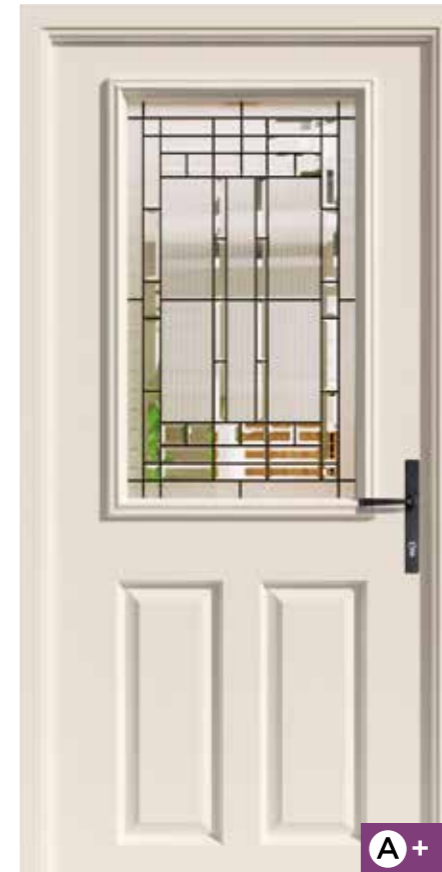
Amazing Glazing

Add a personal touch with bespoke, handcrafted glass.

You've chosen the door style and picked a colour that perfectly complements your home. Now for the finishing touch: glass designed by you and handcrafted by our in-house artisan glaziers.



Glass Code SQ Lead (Square Lead)
Colour Turquoise Blue



Glass Code RG181
Colour Cream



Glass Code FT43 Clear lines and fused tiles on sandblasted background
Colour Light Blue

RG glass designs are only available in the door styles shown and are not available on other door styles. Matching fully glazed sidelights are not available for RG glass, some RG glass is available with matching side panels. There is no choice of backing glass with RG glass. RG glass is only available as shown and cannot be changed by Apeer.



Available width up to 1087mm



Furniture Shown: Sweet handle and Letterplate in Rose Gold

Amazing Glazing

Add a personal touch with bespoke, handcrafted glass.

You've chosen the door style and picked a colour that perfectly complements your home. Now for the finishing touch: glass designed by you and handcrafted by our in-house artisan glaziers.

Kamino

Door ACDD2, Glass RG156, Sidelight Glass SB27
Shown in Porcelain Blue



Available width up to 1087mm

A+

Furniture Shown: Monkey Tail Handle and Push-in Letterplate in Forged Black
SB27 Clear visible border is 25mm



A+

Glass Code RG6
Colour Traffic Yellow



A+

Glass Code RG41
Colour Black



A+

Glass Code RG4
Colour Pale Lilac

Mandalore

Door ACDD3, Glass RG157, Sidelight Glass SB27
Shown in RAL7032 Pebble Grey



Available width up to 1087mm

A+

Furniture Shown: Noble Handle and Push-in Letterplate in Forged Black. SB27 Clear visible border is 25mm.

RG glass designs are only available in the door styles shown and are not available on other door styles. Matching fully glazed sidelights are not available for RG glass, some RG glass is available with matching side panels. There is no choice of backing glass with RG glass. RG glass is only available as shown and cannot be changed by Apeer.

Every effort has been made to reproduce the colour of our Apeer doors and the coloured film in the decorative glass designs. However, printing constraints will give rise to some colour deviation. All Apeer 70mm doors are triple glazed as standard. Please note the grain on the GRP Apeer door does not replicate the grain on the frames as it is a PVC foil. Sidelight and toplight designs will depend on sidelight and toplight final sizes and may vary from design shown. Coloured film in glass designs is not an exact match to the door colour.

Endor

Door ACDQ2, Glass RG158, Sidepanel Glass RG151SL, Shown in Porcelain Blue



Available width up to 1087mm



Furniture Shown: Noble Handle, Push-in Letterplate, Bull Ring knocker and Door Pull all in Forged Black

Amazing Glazing

Add a personal touch with bespoke, handcrafted glass.

You've chosen the door style and picked a colour that perfectly complements your home. Now for the finishing touch: glass designed by you and handcrafted by our in-house artisan glaziers.



Glass Code RG159
Colour Anthracite Grey



Glass Code BO556
Colour Traffic Red



Glass Code BO7
Colour Light Grey



Every effort has been made to reproduce the colour of our Apeer doors and the coloured film in the decorative glass designs. However, printing constraints will give rise to some colour deviation. All Apeer 70mm doors are triple glazed as standard. Please note the grain on the GRP Apeer door does not replicate the grain on the frames as it is a PVC foil. Sidelight and toplight designs will depend on sidelight and toplight final sizes and may vary from design shown. Coloured film in glass designs is not an exact match to the door colour.

RG glass designs are only available in the door styles shown and are not available on other door styles. Matching fully glazed sidelights are not available for RG glass, some RG glass is available with matching side panels. There is no choice of backing glass with RG glass. RG glass is only available as shown and cannot be changed by Apeer.

Door ACDV2, Glass RG168, Sidepanel Glass RG21SL
Shown in Agate Grey



Available width up to 1087mm



Furniture Shown: 1200mm Black bar handle and escutcheon plate

Amazing Glazing

Add a personal touch with bespoke, handcrafted glass.

You've chosen the door style and picked a colour that perfectly complements your home. Now for the finishing touch: glass designed by you and handcrafted by our in-house artisan glaziers.



Glass Code SB27
Colour Light Blue



Glass Code FT48 Clear lines and fused tiles on sandblasted background
Colour Traffic Yellow



Glass Code Diamond Lead (DL)
Colour Traffic Purple

RG glass designs are only available in the door styles shown and are not available on other door styles. Matching fully glazed sidelights are not available for RG glass, some RG glass is available with matching side panels. There is no choice of backing glass with RG glass. RG glass is only available as shown and cannot be changed by Apeer.

Alderaan

Letterplate not available on this door style

Door ACDV2, Glass RG167, Sidepanel Glass RG162SL,
Shown in Anthracite Grey



Available width up to 1087mm



Furniture Shown: 1500mm Square Bar Handle and square escutcheon plate in chrome

Every effort has been made to reproduce the colour of our Apeer doors and the coloured film in the decorative glass designs. However, printing constraints will give rise to some colour deviation. All Apeer 70mm doors are triple glazed as standard. Please note the grain on the GRP Apeer door does not replicate the grain on the frames as it is a PVC foil. Sidelight and toplight designs will depend on sidelight and toplight final sizes and may vary from design shown. Coloured film in glass designs is not an exact match to the door colour.

Toppin 3

Door ACDC3, Glass RG1
Shown in Dark Red



Available width up to 1087mm

A+

Furniture Shown: Classic handle and Letterplate in Chrome

Amazing Glazing

Add a personal touch with bespoke, handcrafted glass.

You've chosen the door style and picked a colour that perfectly complements your home. Now for the finishing touch: glass designed by you and handcrafted by our in-house artisan glaziers.



A+

Toppin 5 ACDC5
Glass Code External Bar
Colour Black



A+

Toppin 2 ACDC2
Glass Code RG34
Colour Dark Green



A+

Toppin 3 ACDC3
Glass Code RG30
Colour Oak

Every effort has been made to reproduce the colour of our Apeer doors and the coloured film in the decorative glass designs. However, printing constraints will give rise to some colour deviation. All Apeer 70mm doors are triple glazed as standard. Please note the grain on the GRP Apeer door does not replicate the grain on the frames as it is a PVC foil. Sidelight and toplight designs will depend on sidelight and toplight final sizes and may vary from design shown. Coloured film in glass designs is not an exact match to the door colour.

RG glass designs are only available in the door styles shown and are not available on other door styles. Matching fully glazed sidelights are not available for RG glass, some RG glass is available with matching side panels. There is no choice of backing glass with RG glass. RG glass is only available as shown and cannot be changed by Apeer.

Marmion

Door ACDL2, Glass RG29
Shown in Chartwell Green



Available width up to 1087mm



Furniture Shown: Classic handle and Letterplate in Chrome

Every effort has been made to reproduce the colour of our Apeer doors and the coloured film in the decorative glass designs. However, printing constraints will give rise to some colour deviation. All Apeer 70mm doors are triple glazed as standard. Please note the grain on the GRP Apeer door does not replicate the grain on the frames as it is a PVC foil. Sidelight and toplight designs will depend on sidelight and toplight final sizes and may vary from design shown. Coloured film in glass designs is not an exact match to the door colour.

Amazing Glazing

Add a personal touch with bespoke, handcrafted glass.

You've chosen the door style and picked a colour that perfectly complements your home. Now for the finishing touch: glass designed by you and handcrafted by our in-house artisan glaziers.



Downton ACDL3
Glass Code RG16
Colour Dark Green



Downton ACDL3
Glass Code RG11
Colour Dark Red



Marmion ACDL2
Glass Code RG23
Colour Steel Blue

RG glass designs are only available in the door styles shown and are not available on other door styles. Matching fully glazed sidelights are not available for RG glass, some RG glass is available with matching side panels. There is no choice of backing glass with RG glass. RG glass is only available as shown and cannot be changed by Apeer.



Kirtling APG4 FT48



STABLE DOORS

Perfect for lazy summer days and fresh frosty mornings, stable doors keep pets and children secure while letting air circulate and sunlight stream in. They also add a touch of rustic charm to any home.



Clear with Stippolyte backing glass.

Stippolyte backing glass.

Every effort has been made to reproduce the colour of our Apeer doors and the coloured film in the decorative glass designs. However, printing constraints will give rise to some colour deviation. All Apeer 70mm doors are triple glazed as standard. Please note the grain on the GRP Apeer door does not replicate the grain on the frames as it is a PVC foil. Glass designs shown in sidelights may vary depending on sidelight width. Coloured film in glass designs is not an exact match to the door colour. Stable doors are not suitable for extremely exposed locations.

Hinge bolts are not available on stable doors.

Hanwell Stable

Door APY4, Glass BO500*
Shown in Cream



Furniture Shown: Gold Handle with Escutcheon Plate. *Glass design shown with Minster backing glass.

RG glass designs are only available in the door styles shown and are not available on other door styles. Matching fully glazed sidelights are not available for RG glass, some RG glass is available with matching side panels. There is no choice of backing glass with RG glass. RG glass is only available as shown and cannot be changed by Apeer.

Door ACDV2 French doors, Glass RG167, Sidelight Glass SB27, Shown in Agate Grey



FRENCH DOORS

Our double doors make a grand entrance. They not only give the front of your home scale and stature, they feature all the robust safety benefits of our single doors. And with a double rebate and triple glazing as standard, they are equally energy efficient.



Every effort has been made to reproduce the colour of our Apeer doors and the coloured film in the decorative glass designs. However, printing constraints will give rise to some colour deviation. All Apeer 70mm doors are triple glazed as standard. Please note the grain on the GRP Apeer door does not replicate the grain on the PVC foil. Glass designs shown in sidelights may vary depending on sidelight width. Coloured film in glass designs is not an exact match to the door colour. Double doors open inward only.

Alderaan French Door Style

Door ACDV2 French doors, Glass RG168, Sidelight Glass SB27, Shown in Black



Hinge bolts are not available on French doors.

French doors are not available in certain styles

Furniture Shown: Chrome Handles, SB27 Clear visible border is 25mm

A++

*Our exclusive, energy efficient A++ rating is an optional upgrade on the door only and is not available with obscure backing glass.

Furniture Shown: Sweet Handle, Sweet Knocker, Sweet Letterplate all shown in Rose Gold. *Glass design shown with Minster backing glass.



ROSE GOLD COLLECTION

Distinctively different and fabulously on-trend, the door furniture and glass designs in our Rose Gold Collection are an exquisite expression of individuality. The Collection has been created to complement the Sweet door furniture range and our pink door shades, but also allows you a bolder choice when paired with creams and pastel colours.



Rowton APM2*
Glass GR1
Shown in Light Pink (RAL 3015)

Every effort has been made to reproduce the colour of our Apeer doors and the coloured film in the decorative glass designs. However, printing constraints will give rise to some colour deviation. Please note the grain on the GRP Apeer door does not replicate the grain on the frame as it is a PVC foil. Glass designs shown in sidelights may vary depending on sidelight width. Coloured film in glass designs is not an exact match to the door colour. Sidelights and toplights for TP glass designs are only available as triple glazed units. Rose Gold designs shown with Antique grey lead.

The glass has been designed by our inhouse glass designers specifically for this collection and any imprints on the film are a natural part of the handcrafted process.

Bespoke Colours

Your front door is the focal point of your home's façade. But it's more than just an entrance. It speaks to the world on your behalf. It reflects your personality and stands for the same things you do.



Rainbow colour options only available on door style APY2 and colours can not be changed as shown

Colours featured are (left to right):
 Telemagenta Pink (RAL 4010),
 Traffic Red (RAL 3020),
 Mandarin Orange (BS06E51),
 Traffic Yellow (RAL 1023),
 Racing Green (RAL 6005),
 Steel Blue,
 Traffic Purple (RAL 4006),
 Telemagenta Pink (RAL 4010).

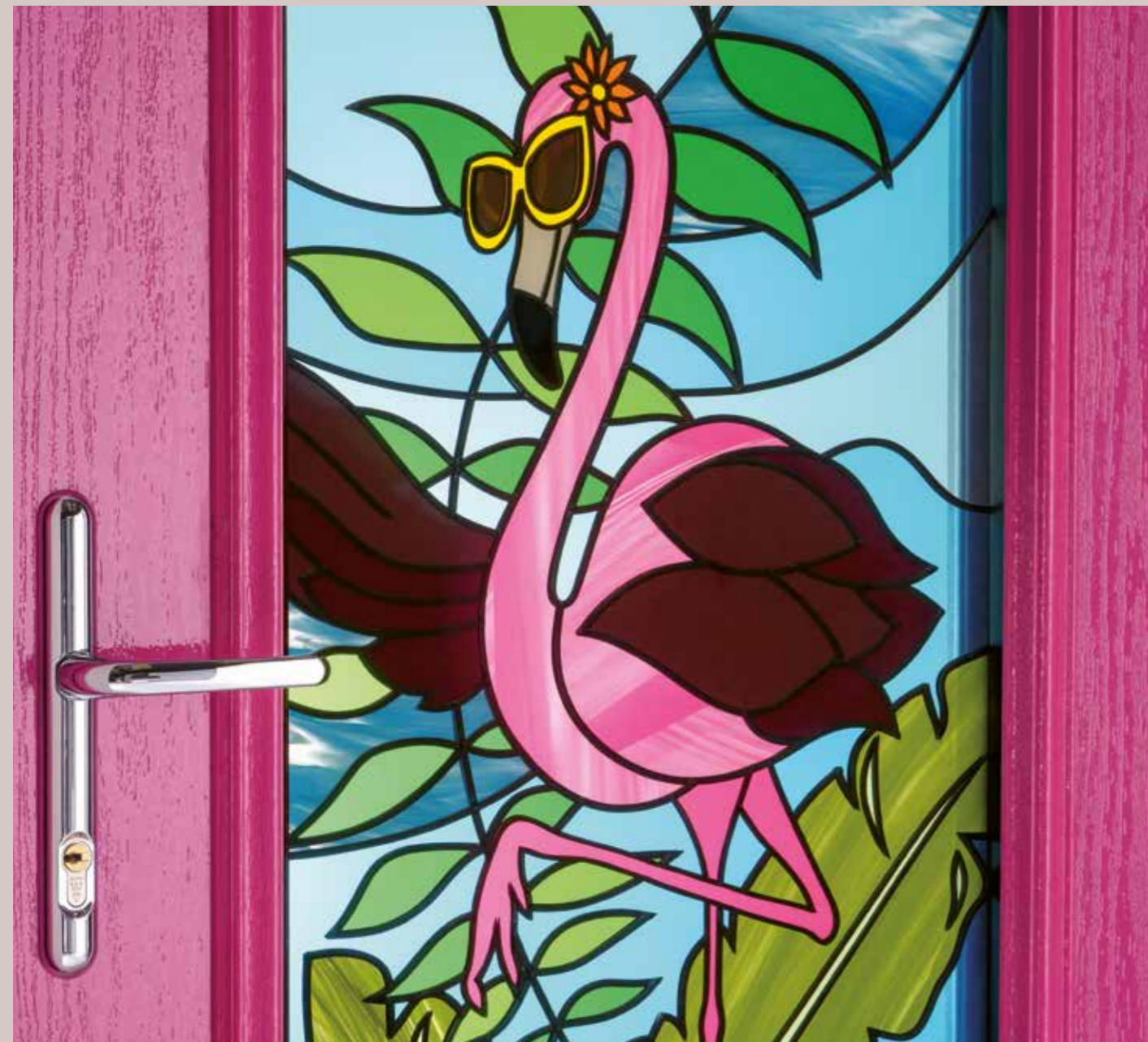
Outer frame and glazing trim are shown in Standard White.

Glass design is lead and coloured film



Fabulous Flamingo

We pride ourselves on the creativity of our amazing glazing artisans. Send us your dream glass design and we'll do our best to make your dream a reality.



Fabulous Flamingo door style shown is ACDV2 Alderaan in Telemagenta Pink (RAL 4010).

Glass design is lead and coloured film.



Available width up to 1087mm

Every effort has been made to reproduce the colour of our Apeer doors and the coloured film in the decorative glass designs. However, printing constraints will give rise to some colour deviation. Please note the grain on the GRP Apeer door does not replicate the grain on the frame as it is a PVC foil. Glass designs shown in sidelights may vary depending on sidelight width. Coloured film in glass designs is not an exact match to the door colour. Sidelights and toplights for TP glass designs are only available as triple glazed units. Rose Gold designs shown with Antique grey lead.

The glass has been designed by our inhouse glass designers specifically for this collection and any imprints on the film are a natural part of the handcrafted process.



CONTEMPORARY COLLECTION

Clean, fresh lines and polished angular details make our Contemporary collection perfect for cutting edge homes and forward-thinking owners.

Birr

Door APTS33, Glass SB27
Shown in Anthracite Grey

A++

*Our exclusive, energy efficient A++ rating is an optional upgrade on the door only and is not available with obscure backing glass.



Furniture Shown: Karcher Handle. SB27 clear visible border is 25mm. Letterbox not available on this door style.

Amazing Glazing

Add a personal touch with bespoke, handcrafted glass.

You've chosen the door style and picked a colour that perfectly complements your home. Now for the finishing touch: glass designed by you and handcrafted by our in-house artisan glaziers.

Door APTS33, Glass TP4*
Shown in Antique Pink (RAL 3014)



Furniture Shown: Sweet handle in Rose Gold. *TP4 glass design has rose gold film and pearlescent bevels, shown with Minster backing glass



Glass Code RG20
Colour Light Blue



Glass Code FT50 (no sandblasting)
Colour Pale Lilac



Glass Code BO500
Colour Porcelain Blue

Every effort has been made to reproduce the colour of our Apeer doors and the coloured film in the decorative glass designs. However, printing constraints will give rise to some colour deviation. All Apeer 70mm doors are triple glazed as standard. Please note the grain on the GRP Apeer door does not replicate the grain on the frames as it is a PVC foil. Glass designs shown in sidelights may vary depending on sidelight width. Coloured film in glass designs is not an exact match to the door colour. The glass has been designed by our inhouse glass designers specifically for this collection and any imprints on the film are a natural part of the handcrafted process.

RG glass designs are only available in the door styles shown and are not available on other door styles. Matching fully glazed sidelights are not available for RG glass, some RG glass is available with matching side panels. There is no choice of backing glass with RG glass. RG glass is only available as shown and cannot be changed by Apeer.

Mawes

Door APTS2, Glass BO500*
Shown in Black

A++

*Our exclusive, energy efficient A++ rating is an optional upgrade on the door only and is not available with obscure backing glass.



Furniture Shown: Karcher handle in stainless steel. *Glass design shown with Minster backing glass.

Amazing Glazing

Add a personal touch with bespoke, handcrafted glass.

You've chosen the door style and picked a colour that perfectly complements your home. Now for the finishing touch: glass designed by you and handcrafted by our in-house artisan glaziers.

Door APTS2, Glass BO501
Shown in Light Grey



A++

Furniture Shown: Black classic handle. *Glass design shown with Minster backing glass.



A++

Glass Code SB27
Colour Green Mist



A++

Glass Code BO559
Colour Agate Grey



A+

Glass Code RG46
Colour Turquoise Blue

Every effort has been made to reproduce the colour of our Apeer doors and the coloured film in the decorative glass designs. However, printing constraints will give rise to some colour deviation. All Apeer 70mm doors are triple glazed as standard. Please note the grain on the GRP Apeer door does not replicate the grain on the frames as it is a PVC foil. Glass designs shown in sidelights may vary depending on sidelight width. Coloured film in glass designs is not an exact match to the door colour. The glass has been designed by our inhouse glass designers specifically for this collection and any imprints on the film are a natural part of the handcrafted process.

RG glass designs are only available in the door styles shown and are not available on other door styles. Matching fully glazed sidelights are not available for RG glass, some RG glass is available with matching side panels. There is no choice of backing glass with RG glass. RG glass is only available as shown and cannot be changed by Apeer.

Dalston

Door APTS12, Glass FT50 on clear glass
Sidelight Glass SB27, Shown in Black

A++

*Our exclusive, energy efficient A++ rating is an optional upgrade on the door only and is not available with obscure backing glass.



Furniture Shown: 600mm Bar Pull Handle. SB27 clear visible border is 25mm.

Amazing Glazing

Add a personal touch with bespoke, handcrafted glass.

You've chosen the door style and picked a colour that perfectly complements your home. Now for the finishing touch: glass designed by you and handcrafted by our in-house artisan glaziers.



Glass Code SB123
Colour Light Blue



Glass Code SB26
Colour Traffic Yellow



Glass Code SB27
Colour Light Grey

Every effort has been made to reproduce the colour of our Apeer doors and the coloured film in the decorative glass designs. However, printing constraints will give rise to some colour deviation. All Apeer 70mm doors are triple glazed as standard. Please note the grain on the GRP Apeer door does not replicate the grain on the frames as it is a PVC foil. Glass designs shown in sidelights may vary depending on sidelight width. Coloured film in glass designs is not an exact match to the door colour. The glass has been designed by our inhouse glass designers specifically for this collection and any imprints on the film are a natural part of the handcrafted process.

RG glass designs are only available in the door styles shown and are not available on other door styles. Matching fully glazed sidelights are not available for RG glass, some RG glass is available with matching side panels. There is no choice of backing glass with RG glass. RG glass is only available as shown and cannot be changed by Apeer.

Fraser

Door APTS16, Glass RG21,
Sidelight Glass SB27, Shown in White



Furniture Shown: 600mm Bar Pull Handle. SB27 clear visible border is 25mm.

A+

Amazing Glazing

Add a personal touch with bespoke, handcrafted glass.

You've chosen the door style and picked a colour that perfectly complements your home. Now for the finishing touch: glass designed by you and handcrafted by our in-house artisan glaziers.



A++

Glass Code SB121
Colour Traffic Red



A++

Glass Code SB27
Colour Porcelain Blue



A+

Glass Code RG23
Colour Black

Every effort has been made to reproduce the colour of our Apeer doors and the coloured film in the decorative glass designs. However, printing constraints will give rise to some colour deviation. All Apeer 70mm doors are triple glazed as standard. Please note the grain on the GRP Apeer door does not replicate the grain on the frames as it is a PVC foil. Glass designs shown in sidelights may vary depending on sidelight width. Coloured film in glass designs is not an exact match to the door colour. The glass has been designed by our inhouse glass designers specifically for this collection and any imprints on the film are a natural part of the handcrafted process.

RG glass designs are only available in the door styles shown and are not available on other door styles. Matching fully glazed sidelights are not available for RG glass, some RG glass is available with matching side panels. There is no choice of backing glass with RG glass. RG glass is only available as shown and cannot be changed by Apeer.

Beetham

Door APTS6, Glass SB27, Sidelight Glass SB27 with Clear backing glass, Shown in Dark Green

A++

*Our exclusive, energy efficient A++ rating is an optional upgrade on the door only and is not available with obscure backing glass.



Furniture Shown: 1200mm bar handle

Amazing Glazing

Add a personal touch with bespoke, handcrafted glass.

You've chosen the door style and picked a colour that perfectly complements your home. Now for the finishing touch: glass designed by you and handcrafted by our in-house artisan glaziers.



Kenmure APTS4
Glass Code SB27
Colour Dark Green



Beetham APTS6
Glass Code FT50 (no sandblast)
Colour Green Mist



Beetham APTS6
Glass Code RG35
Colour Black



Kenmure APTS4
Glass Code RG20
Colour Anthracite Grey



Beetham APTS6
Glass Code RG18
Colour Light Grey

Every effort has been made to reproduce the colour of our Apeer doors and the coloured film in the decorative glass designs. However, printing constraints will give rise to some colour deviation. All Apeer 70mm doors are triple glazed as standard. Please note the grain on the GRP Apeer door does not replicate the grain on the frames as it is a PVC foil. Glass designs shown in sidelights may vary depending on sidelight width. Coloured film in glass designs is not an exact match to the door colour. The glass has been designed by our inhouse glass designers specifically for this collection and any imprints on the film are a natural part of the handcrafted process.

RG glass designs are only available in the door styles shown and are not available on other door styles. Matching fully glazed sidelights are not available for RG glass, some RG glass is available with matching side panels. There is no choice of backing glass with RG glass. RG glass is only available as shown and cannot be changed by Apeer.

Compton

Door APTS26, Glass RG54, Sidelight Glass SB27, Shown in Light Grey



Furniture Shown: 1200mm Bar Pull Handle, SB27 clear visible border is 25mm.

A+

Amazing Glazing

Add a personal touch with bespoke, handcrafted glass.

You've chosen the door style and picked a colour that perfectly complements your home. Now for the finishing touch: glass designed by you and handcrafted by our in-house artisan glaziers.



A+

Compton APTS26
Glass Code RG165
Colour White



A+

Lulworth APTS29
Glass Code RG164
Colour Light Blue



A+

Compton APTS26
Glass Code RG162
Colour Mandarin Orange

Every effort has been made to reproduce the colour of our Apeer doors and the coloured film in the decorative glass designs. However, printing constraints will give rise to some colour deviation. All Apeer 70mm doors are triple glazed as standard. Please note the grain on the GRP Apeer door does not replicate the grain on the frames as it is a PVC foil. Glass designs shown in sidelights may vary depending on sidelight width. Coloured film in glass designs is not an exact match to the door colour. The glass has been designed by our inhouse glass designers specifically for this collection and any imprints on the film are a natural part of the handcrafted process.

RG glass designs are only available in the door styles shown and are not available on other door styles. Matching fully glazed sidelights are not available for RG glass, some RG glass is available with matching side panels. There is no choice of backing glass with RG glass. RG glass is only available as shown and cannot be changed by Apeer.

Mortham

Door APTS0, Sidelight Glass SB27
Shown in Anthracite Grey

A++

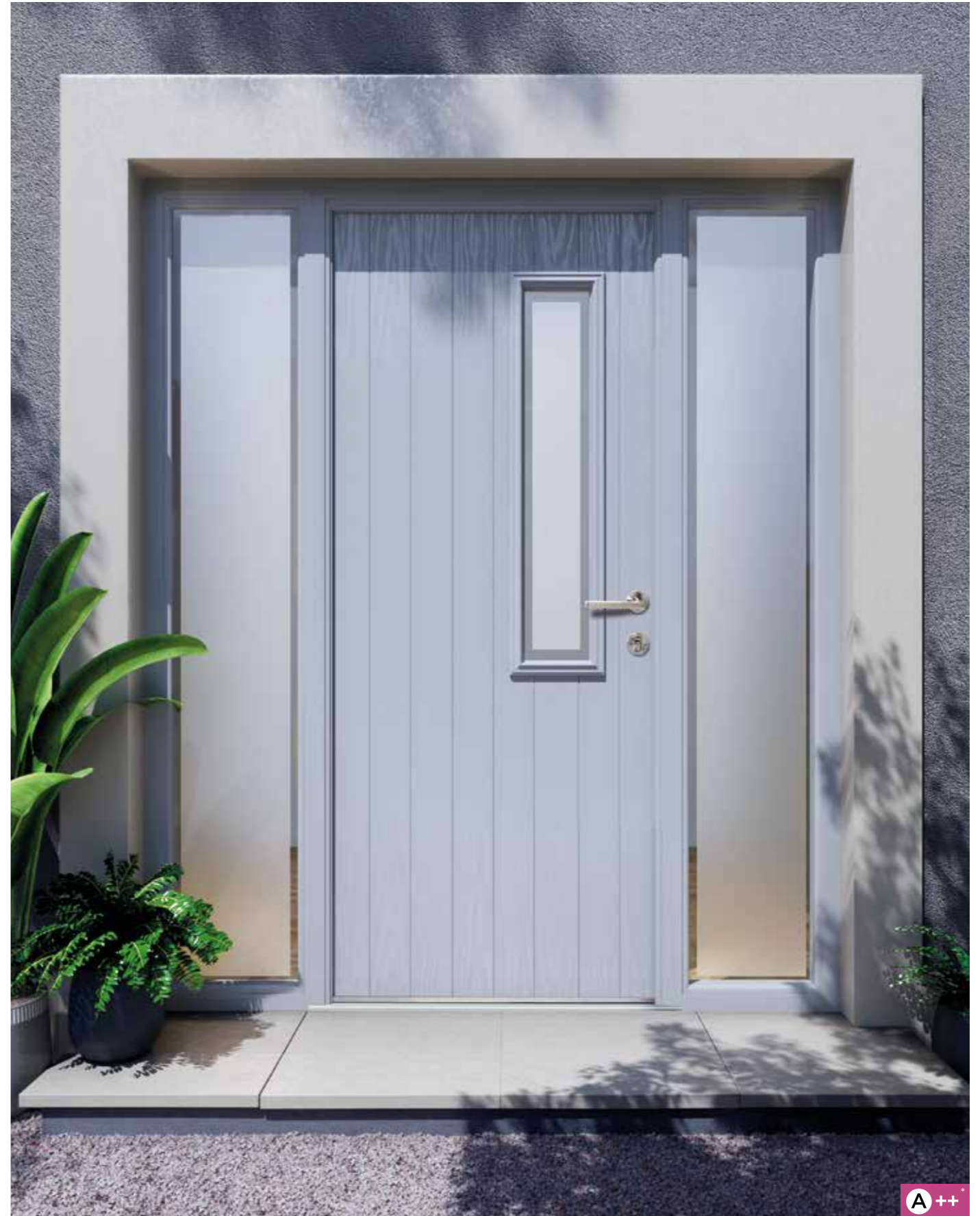
*Our exclusive, energy efficient A++ rating is an optional upgrade on the door only and is not available with obscure backing glass.



Furniture Shown: Karcher Handle shown in Chrome. SB27 clear visible border is 25mm.

Bickleigh

Door APTS25, Glass SB27
Shown in Light Grey



Furniture Shown: Karcher Handle shown in Stainless Steel. SB27 clear visible border is 25mm.

Every effort has been made to reproduce the colour of our Apeer doors and the coloured film in the decorative glass designs. However, printing constraints will give rise to some colour deviation. All Apeer 70mm doors are triple glazed as standard. Please note the grain on the GRP Apeer door does not replicate the grain on the frames as it is a PVC foil. Glass designs shown in sidelights may vary depending on sidelight width. Coloured film in glass designs is not an exact match to the door colour. The glass has been designed by our inhouse glass designers specifically for this collection and any imprints on the film are a natural part of the handcrafted process.

A++

S M O O T H A S

Our designers have created a sleek and effortlessly luxurious range that makes a stylish statement. The surface of Silka has a unique, smooth texture that sets the range apart from any other.

SILKA

LOVE EVERY

COLOUR

You bring the colour.
 We'll match the door.
 New Silka Colour.
 A match for anything.

Hayton

Door SFG20, Glass RG163, Sidepanel Glass RG163SL
 Shown in Black with Lines

Available in any **colour**



Furniture Shown: 1200mm Bar Pull Handle.



RG glass designs are only available in the door styles shown and are not available on other door styles. Matching fully glazed sidelights are not available for RG glass, some RG glass is available with matching side panels. There is no choice of backing glass with RG glass. RG glass is only available as shown and cannot be changed by Apeer.

Hayton

Door SFG20, Glass RG164, Sidepanel Glass RG164SL
Shown in Light Pink

Available in any **colour**



A+

Furniture Shown: 1200mm Bar Pull Handle

Door SFG20, Glass RG162, Sidepanel Glass RG162SL
Shown in Anthracite Grey

Available in any **colour**



A+

Door SFG20, Glass RG165, Sidepanel Glass RG165SL
Shown in Porcelain Blue

Available in any **colour**



A+



Available in any **colour**

Door SFG20, Glass RG166, Sidepanel Glass RG166SL
Shown in Green Mist

Available in any **colour**



A+

Every effort has been made to reproduce the colour of our Apeer doors and the coloured film in the decorative glass designs. However, printing constraints will give rise to some colour deviation. All Apeer 70mm doors are triple glazed as standard. Please note the grain on the GRP Apeer door does not replicate the grain on the frames as it is a PVC foil. Glass designs shown in sidelights may vary depending on sidelight width. Coloured film in glass designs is not an exact match to the door colour.

RG glass designs are only available in the door styles shown and are not available on other door styles. Matching fully glazed sidelights are not available for RG glass, some RG glass is available with matching side panels. There is no choice of backing glass with RG glass. RG glass is only available as shown and cannot be changed by Apeer.

Introducing a new smooth textured glazing trim on our Silka Doors. This new design allows us to offer the Silka Hayton door style in all our colours, making it more versatile and suitable for any residential setting.



Wilton

Door SFG7 - Glass Trim, Glass SB27
Shown in Black with Lines

A++

*Our exclusive, energy efficient A++ rating is an optional upgrade on the door only and is not available with obscure backing glass.



Furniture Shown: 1200mm Bar Pull Handle, SB27 clear visible border is 25mm.

Every effort has been made to reproduce the colour of our Apeer doors and the coloured film in the decorative glass designs. However, printing constraints will give rise to some colour deviation. All Apeer 70mm doors are triple glazed as standard. Glass designs shown in sidelights may vary depending on sidelight width. Coloured film in glass designs is not an exact match to the door colour.

Wilton

Door SFG7 - Glass Trim, Glass SB27
Shown in Anthracite Grey



Furniture Shown: 1200mm Bar Pull Handle, SB27 clear visible border is 25mm.

A++



WAIST HIGH LOCK SYSTEM

Shown (left) with round escutcheon plate and 1200mm bar pull handle.



Shown (above) with round escutcheon plate and Karcher lever handle.

INTERNAL GLAZING FINISH

All-glass glazing trims are finished with stainless steel trims on the inside.



CONTEMPORARY FRAME

The Silka Collection is manufactured with a chamfered frame.



HINGE OPTIONS

All Silka doors are available with a choice of two hinges:

Flag Hinges

Butt Hinges



External view:
Anthracite Grey shown with round escutcheon plate and 1200mm bar handle on the outside.

Internal view:
Light Grey shown with round escutcheon plate and Karcher lever handle.



External View

SILKA COLOUR OPTIONS:

SFG0 - SFG6

Available in all colours including suitable RAL and BS colours.

SFG7 + SFG8

Only available in Anthracite grey and Black outside (to match the all-glass trim).

SFG20

Available in all colours including suitable RAL and BS colours.

Bespoke lines

Only available on Anthracite grey and Black



FINGER PULL
Shown in stainless steel. Also available in black.



Internal View

Every effort has been made to reproduce the colour of our Apeer doors and the coloured film in the decorative glass designs. However, printing constraints will give rise to some colour deviation. All Apeer 70mm doors are triple glazed as standard. Glass designs shown in sidelights may vary depending on sidelight width. Coloured film in glass designs is not an exact match to the door colour.

Please note 'Tea staining' on stainless steel components is common and is caused by the oxidation of surface contaminants on stainless steel. It is not an indication of quality and does not affect the structural integrity or the longevity of the material and periodic cleaning of the stainless steel trims will reduce the likelihood of tea staining.



MODO COLLECTION

The very latest international design trends influence our cutting edge Modo Collection.

Somerton

Door AMD2, Glass ST61, Sidelight Glass SB27
Shown in Anthracite Grey

A++

*Our exclusive, energy efficient A++ rating is an optional upgrade on the door only and is not available with obscure backing glass.



Furniture Shown: 1200mm Bar Pull Handle, SB27 clear visible border is 25mm.

All MODO doors excluding Double doors are available with lever handles or contemporary handles. Double doors are only available with lever handles. Please note 'Tea staining' on stainless steel components is common and is caused by the oxidation of surface contaminants on stainless steel. It does not affect the structural integrity or the longevity of the material and regular cleaning of the stainless steel trims will reduce the likelihood of tea staining.

Elsdon

Door AMD5, Glass SR30, Sidelight Glass SB27
Shown in Anthracite Grey



Furniture Shown: Karcher Handle shown in Stainless Steel, SB27 clear visible border is 25mm.

Please note 'Tea staining' on stainless steel components is common and is caused by the oxidation of surface contaminants on stainless steel. It is not an indication of quality and does not affect the structural integrity or the longevity of the material and periodic cleaning of the stainless steel trims will reduce the likelihood of tea staining.

A++

Our new glazed GRP side panels add style and sophistication to your home.

The ultimate partner to your door. Perfectly match your door glass design with your sidelight glass using our latest innovation in sidelight design. The moulded glazing trim matches perfectly to the door and we ensure a designer look by lining the top of the door and side panel trims across the full width of your door set.



Apeer side panels are made using high strength glass fibre laminate, utilising a combination of glass fibre weave, reinforced with magnesium silicate board and high density foam to ensure the ultimate in security and energy efficiency.



Max width: 550mm inc frame
Max height: same height as door
Min width: TBC
Min height: TBC

Witness lines are visible between the horizontal and vertical panels that make up the doors and side panels. Combined with our realistic grained finish, the witness lines add to the natural look of your door.

Side panels are only available with certain door styles and RG glass designs.

ACCESSORIES

Designed with care and crafted to last, our accessories have been created to complement our door collections. From traditional rustic metalwork to high-end polished chrome, you don't have to look further than the next few pages to complete your Apeer door.

PREMIUM Architectural Door Furniture

Architectural Door Furniture
is available in 2 colours:
Chrome & Satin Silver

Door Handle shown in Chrome



Door Knocker and Push-in Letterplate
both shown in Chrome



PREMIUM Heritage Door Furniture

Bull Ring Knocker
Shown in Satin Silver



Our Heritage range has been designed with curved corners on the handle and letterplate to suit a more traditional style.

Heritage Door Furniture is available in 2 colours: Chrome & Satin Silver

Doctors Knocker only available in Chrome as shown



The Doctors Knocker has a 1 year guarantee



Push-in Letterplate
Shown in Chrome

Door Pull
Shown in Satin Silver

Door Handle
Shown in Chrome

PREMIUM Limited Edition Door Knockers

Add a touch of character to your door entrance. Each knocker has been handcrafted and finished using high quality materials. So if you're looking for something truly unique, this collection suits all styles and tastes.

Our Bumble Bee, Dragonfly and Heart Knockers are only available in Chrome and can only be fitted to certain door styles.



Bumble Bee Knocker
Shown in Chrome



Dragonfly Knocker
Shown in Chrome



Heart Knocker
Shown in Chrome



PREMIUM Sweet Door Furniture

Door Handle shown in Rose Gold



Sweet Door Furniture is available in 5 colours: Rose Gold, Chrome, Black, Satin Silver and Gold.

Door Knocker shown in Rose Gold



Letterplate and Numeral shown in Rose Gold



PREMIUM Stainless Steel Door Furniture

Door Handle shown in Stainless Steel



Our stainless-steel door furniture is particularly suited to coastal areas with higher salt content in the air. Corrosion-resistant, just like the doors themselves, means minimal upkeep and maximum visual impact.



Door Knocker and Letterplate both shown in Stainless Steel



Contemporary Door Handles

Our range of modern, stainless steel and black handles will give your door a super-sleek look.



Lynx - Black Round Handle



Polaris - Black Square Handle



Antares - Stainless Steel Round Handle



Epsilon - Stainless Steel Square Handle



Waist high lock system with round escutcheon plate and Karcher lever handle.

Contemporary Bar Pull Handles

Table showing options for possible handle combinations:

Outside	Inside
Bar Handle + escutcheon plate	Bar Handle + escutcheon plate
Bar Handle + escutcheon plate	Escutcheon + finger pull only
Bar Handle + escutcheon plate	Lever Handle
Escutcheon plate and finger pull only	Escutcheon plate and finger pull only
Lever Handle	Lever Handle



1800mm Bar Handle

1200mm Bar Handle

600mm Bar Handle

1500mm Square Bar Handle

1200mm Black Bar Handle

1200mm Black Square Bar Handle

1200mm Off-set Square Bar Handle

PREMIUM Forged Black Door Furniture

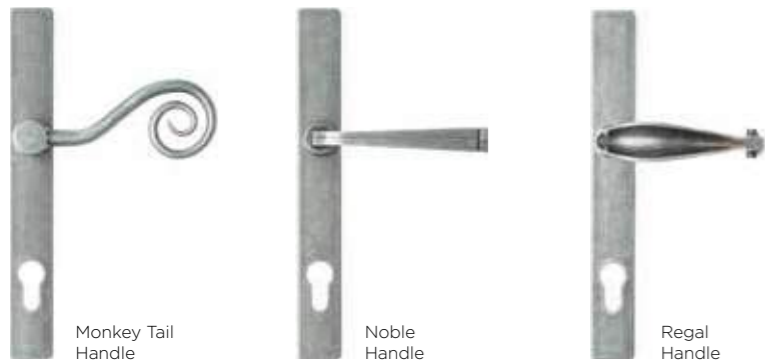


Push-in Letterplate



Door Pull

PREMIUM Pewter Door Furniture



Push-in Letterplate



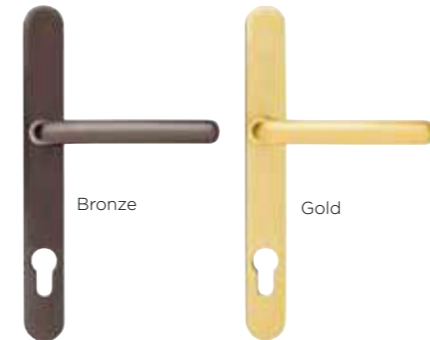
Door Pull

Door Handles

Classic Lever Handles
(also available with split handle)



Classic Lever Pad Handles
(with split handle)



Door Knockers

Contemporary Knocker



Chrome Antique Black Black Bronze



Gold Satin Silver White

Scroll Knocker



Chrome Antique Black Black Bronze



Gold Satin Silver White

Slimline Knocker



Chrome Antique Black Black Bronze



Gold Satin Silver White

Urn Knocker

Also available with spyhole



Antique Black Antique Black Black Bronze



Gold Satin Silver White

Lionshead Knocker



Chrome Antique Black Black Bronze



Gold Satin Silver White

Door Letterplates and Accessories

Letterplates



Chrome



Antique Black



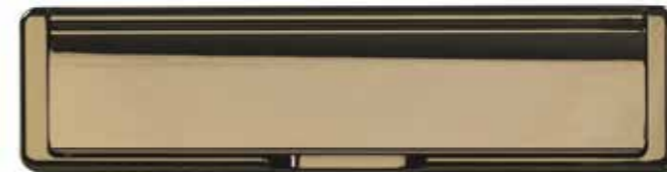
Gold



Black



Satin Silver



Bronze



White

Escutcheon Plate
Shown in stainless steel.
Also available in brass.



Finger Pull
Shown in stainless steel.
Also available in black and brass.



Flag Hinge
Flag hinges are available in Black, Bronze, White, Gold, Chrome, Brown and Satin Silver



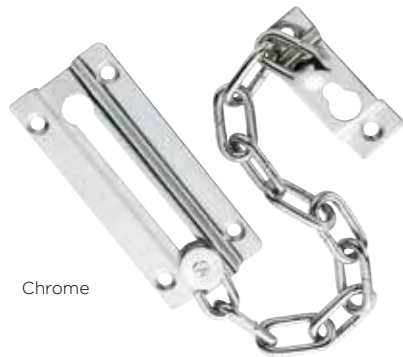
Security Chain



Gold

Numerals

Available in:
Antique Black
Black
Bronze
Chrome
Gold
Satin Silver



Chrome

Spyholes



Gold



Chrome



Black

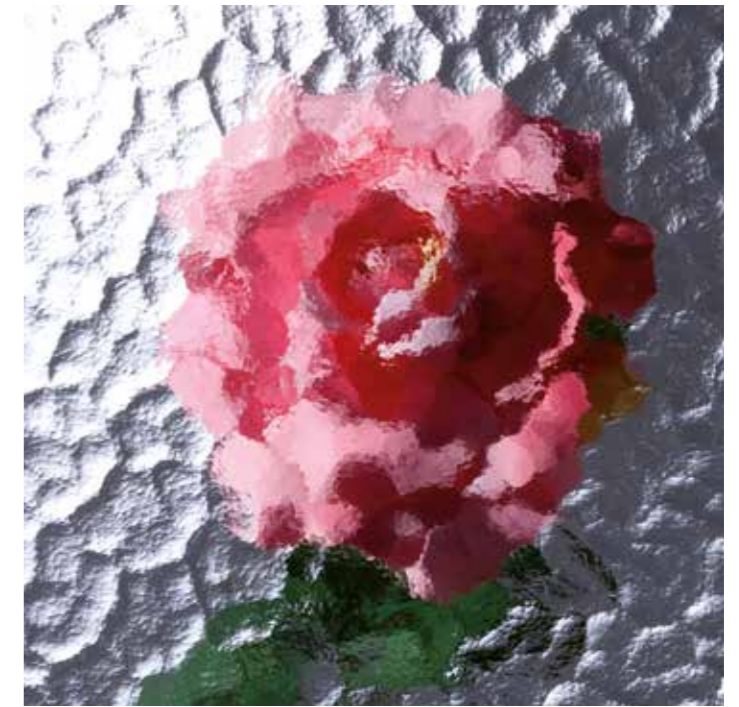
Euro Rebate Butt Hinge

Butt hinges are available in Gold, White, Chrome and Brown



BACKING GLASS OPTIONS

All of the door designs (except RG glass codes) featured throughout the brochure can be backed with a range of obscure glass to suit all requirements for energy efficiency, safety and privacy. This is our standard range but we can offer more styles upon request. Please note there may be an additional charge for non standard obscure glass patterns. There is no choice of backing glass for any of the RG glass code designs shown.



Minster



Flemish



Stippolyte



Cotswold



Contour



Satin

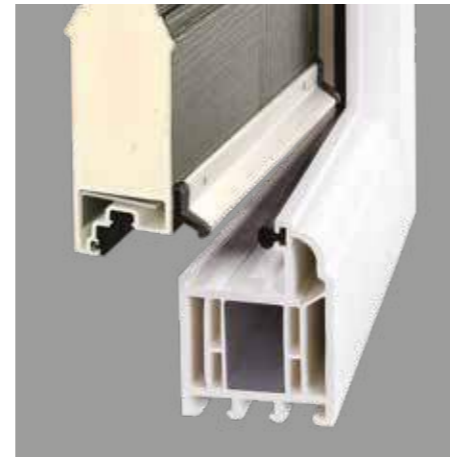
THRESHOLD OPTIONS



MDS70 Threshold (25mm) Shown with ramp
Distance from bottom of door leaf to bottom of threshold 18mm



uPVC Low Frame Threshold
Distance from bottom of door leaf to bottom of threshold 27mm



uPVC Full Frame Threshold
Distance from bottom of door leaf to bottom of threshold 43mm

HALF AND QUARTER PANELS



Half Panel Sizing

APHP1

Min width - 585mm
Min height - 688mm
Max width - 900mm
Max height - 914mm



Quarter Panel Sizing

APQP1

Min width - 264mm
Min height - 688mm
Max width - 540mm
Max height - 900mm



Flat Panel Sizing

APFP1

Max width - 420mm
Max height - 885mm



T&G Panel Sizing

APTPH

Max width - 1026mm
Max height - 1089mm

SIDELIGHTS AND TOPLIGHTS

All decorative glass designs shown in doors with the RG code are available with a choice of sidelight and toplight options as shown. Due to the unique construction of the RG glass it is not possible to create matching sidelights or toplights.



MODO DOORS

Pages 94-97



Kylemore AMD1 (Glass FT90) **Somerton** AMD2 (Glass ST61) **Astwell** AMD3 (Glass SB40) **Dilston** AMD4 (Glass FT66) **Elsdon** AMD5 (Glass SR30) **Danby** AMD6 (Glass SB35) **Howard** AMD7 (Glass FT70)



Crom AMD8 (Glass FT72) **Oakham** AMD9 (Glass ST61) **Skipsea** AMD10 (Glass FT66) **Cashel** AMD11 (Glass FT66) **Lismore** AMD12 (Glass FT66) **Halton** AMD20 (Glass SB26) **Gosford** AMD21 (Glass SB26)

MODO FRAMES

Now with a choice of chamfered or sculptured frames.

Chamfered frame colours are only available in certain colours - contact the office for more details.

AMD20 & AMD21 are not available in White.

Handle options for Modos doors with a chamfered frame are the same waist high options as Silka.



Chamfered Frame



Sculptured Frame

SILKA DOORS

(All shown with Glass design SB27. SB27 clear visible border is 25mm)

Pages 82-93



Goodrich SFG0 **Goodrich** SFG0 - With Lines **Wigmore** SFG1 **Caldwell** SFG2 **Caldwell** SFG2 - With Lines **Walmer** SFG3



Sutton SFG4 **Ashton** SFG5 **Ashton** SFG5 - With Lines **Turton** SFG6 **Wilton** SFG7 **Wilton** SFG7 - With Lines



Hopton SFG8 **Hopton** SFG8 - With Lines **Hayton** SFG20

TRADITIONAL DOORS

APC1, APL1, APPI, APS1 solid styles are also available (not shown)



Dunluce 1
APA1
Page 28

Dunluce 2
(Glass BO500)
APA2
Page 29

Dunluce 3
(Glass LF549)
APA3
Page 29

Chester 2
(Glass FT29)
APC2

Chester 3
(Glass BO501)
APC3

Longthorpe 1
(Glass FT31)
APG1

Longthorpe 2
(Glass FT31)
APG3

Portland
(Glass LF515)
APL2
Page 32



Rowton 1
APM1
Page 21

Rowton 2
(Glass LF549)
APM2
Page 24

Dunrobin 2
(Glass FT50)
APP4

Lambton
(Glass B07)
APS2
Page 38

Wardour
(Glass LF545)
APT2

Corellia
(Glass SB27)
APW2
Page 40

Hanwell 1
(Glass BO500)
APY1

Hanwell 2
(Glass BO500)
APY2
Page 36

CONTEMPORARY DOORS



Mortham
APTS0
Page 80

Mawes
(Glass RG46)
APTS2
Page 70

Kenmure
(Glass SB27)
APTS4
Page 77

Allington
(Glass FT45)
APTS5

Beetham
(Glass RG18)
APTS6
Page 76

Bewley
(Glass SB16)
APTS10

Clifton
(Glass SB20)
APTS11

Dalston
(Glass SB27)
APTS12
Page 72



Wharton
(Glass RG62)
APTS22

Haddon
(Glass SB26)
APTS23

Wingfield
(Glass FT55)
APTS24

Bickleigh
(Glass RG23)
APTS25
Page 81

Compton
(Clear Glass)
APTS26
Page 78

Lyndford
(Glass RG20)
APTS28

Lulworth
(Glass RG56)
APTS29
Page 79

Harewood
(Glass RG34)
APTS30

ACCESSIBLE DOORS



Banwell 1
ACDA1

Banwell 2
(Glass RG18)
ACDA2

Banwell 3
(Glass RG36)
ACDA3
Page 30

Toppin 2
(Glass RG34)
ACDC2
Page 53

Toppin 3
(Glass RG30)
ACDC3
Page 52

Toppin 5
ACDC5
Page 53

Kamino
(Glass RG4)
ACDD2
Page 46

Mandalore
(Glass RG157)
ACDD3
Page 47



Hoth
(Glass RG181)
ACDG3
Page 44

Muncaster
ACDG4

Marmion
(Glass RG23)
ACDL2
Page 54

Downton
(Glass RG11)
ACDL3
Page 55

Witton 1
ACDM1

Witton 2
(Clear Glass)
ACDM2
Page 26

Endor
(Glass RG159)
ACDQ2
Page 48

Alderaan
(Glass SB27)
ACDV2
Page 50



Brodie
(Glass SB18)
APTS13

Fraser
(Glass RG21)
APTS16
Page 74

Bamburgh
(Clear Glass)
APTS17

Norris
(Glass SB27)
APTS18

Howgill
(Glass RG17)
APTS19

Kingsgate
(Glass RG1)
APTS20

Linstock
(Glass Dia. Lead)
APTS21



Walden
(Glass SB26)
APTS31

Clifden
(Glass RG23)
APTS32

Birr
(Glass SB26)
APTS33
Page 68

Leslie
(Glass SB27)
APTS34

Calshot
(Glass FT43)
APTS35

Netley
(Glass FT82)
APTS36

Croft
(Glass FT81)
APTS37